

MED

CRUISE

1967-1968





Ship's History

In Honor of

LIEUTENANT EDWARD FITZGERALD BEALE, UNITED STATES NAVY

BEALE was launched on 24 August 1942 at Staten Island, New York, and christened by Miss Nancy Beale, great-grand-niece of Lieutenant Beale. She was commissioned as the (DD-471) on 23 December 1942, at the New York Naval Shipyard.

BEALE'S battle career began in the Asiatic-Pacific Theater on 16 August 1943 in the Amphibious operation of Kiska. Participation in air and surface battles, ranging from the New Guinea Operations to the bombardment of Okinawa Gunto, marked the sea career of this gallant destroyer. Despite enemy fire and plane attacks BEALE emerged without damage or casualties among the personnel.

BEALE took part in the bombardment, assault and occupation of Iheya Shima off northern Okinawa on 3 June 1945. On 24 June, in company with Destroyer Squadron 24, BEALE departed the area and proceeded to Leyte. The vessel returned to Buckner Bay, Okinawa on 16 July and commenced operations with Task Force 96.

Upon cessation of hostilities, BEALE started operations with the Fifth Fleet.

In January 1947, BEALE was inactivated and assigned to the Atlantic Reserve Fleet, Charleston, South Carolina. At the Boston Naval Shipyard in November 1951, she was recommissioned (DDE-471).

BEALE operated along the east coast of the United States, and in the Mediterranean and Caribbean Seas for the next five years. In 1955, BEALE along with other ships of Escort Division 22 operated with the USS NAUTILUS (SS(N)571), the world's first nuclear powered submarine, for evaluation and ASW training.

In March of 1957 BEALE departed Norfolk for the Persian Gulf by way of Africa, and returned through the Mediterranean Sea. During BEALE'S cruise more than 42,000 miles passed beneath her keel as she visited 14 countries.

From March 1958 to May 1961 BEALE was part of Task Group ALFA, a force whose aim was to develop new and improve old techniques and tactics in the art of Anti-submarine warfare. From June 1961 until October 1962 BEALE served as a part of an Anti-submarine ready force operating in the Atlantic. In July 1962 BEALE was redesignated a DD. In November of that year the ship participated in the Cuban Quarantine operations, and BEALE returned to Cuban waters in March 1963 as part of the Cuban Surveillance operation. In November 1963 BEALE sailed from Norfolk for a six month deployment with the Sixth Fleet in the Mediterranean.

Upon her return in May 1964 until May 1966 BEALE assumed ASW duties with Destroyer Squadron 36.

In June 1966, BEALE was placed under the operational command of Destroyer Squadron 32 and deployed with that squadron to the South China Sea. The ship fired over 2000 rounds doing naval gunfire support missions along the coast of South Vietnam, and she operated with attack carriers in the Tonkin Gulf. BEALE returned to Norfolk in December 1966 having completed an "around-the-world" cruise. In January 1967 BEALE again assumed ASW duties with Destroyer Squadron 36 in the Atlantic. In November of 1967 BEALE deployed to the Mediterranean with DESRON 32.

BEALE is 376 feet long and 39 feet wide. Her main battery consists of two dual purpose 5" mounts and also carries two batteries of 3" anti-aircraft guns. BEALE is designed primarily for warfare against enemy submarines and in this respect, carries Weapon ALFA, two hedgehog mounts, and ASW torpedoes. She is capable of speeds in excess of 30-knots. BEALE at present carries approximately 240 enlisted men in her crew and 14 officers.



CDR D. W. JONES, USN

Commanding Officer

CDR Donald W. JONES is a native of Amoret, Missouri, the son of Mr. and Mrs. W. B. Jones. He attended the local grade and high school then received a BS Degree in Education from Central Missouri State College in Warrensburg, Missouri.


CDR JONES entered the Navy through the OCS Program in 1952 after a short period of employment with the Missouri State Highway Department.

The USS BEALE (DD-471) is the seventh ship in which CDR JONES has served. These include ships ranging from the smallest, a Patrol Craft Escort, to the largest, an Attack Carrier. He commanded the USS FARMINGTON (PCE-894) and took command of USS CARPENTER (DD-825) during a FRAM conversion after having served as Executive Officer for 18 months. Other billets include; Executive Officer, USS WORLARD (PCE-845) and Engineer Officer, USS JOHN S. MCCAIN (DL-3). His most recent billet has been Engineer Officer of USS SARATOGA (CVA-60).

CDR JONES attended the U. S. Naval Post-graduate School where he received an additional degree in Mechanical Engineering. He served one tour in a technical billet with the Polaris Submarine Navigation System at Sperry Gyroscope Company.

CDR JONES is married to the former Theodora DeKoster of Hull, Iowa. CDR and Mrs. JONES reside in Norfolk, Virginia with their four children; Kathy, Linda, Philip and Jeffrey.





This cruise book is intended to provide a record of one short period in the long and interesting life of our proud ship BEALE. The history of the BEALE and of our Navy is also the history of the thousands of men who have manned her through the years.

For those of you who have given some of the best years of your life to add to the laurels of this fine ship will have many fond memories as you thumb the pages.

Our determination and our accomplishments fill this book. The hard work, long hours, the good liberties, and the teamwork made us a crew that presented a fine image of the ship, US Navy and our country.

To our loved ones left behind, may this book help breach the gap so that you may feel you were a part of the team during this period. The sacrifices you made, your thoughts and prayers and your letters added to our accomplishments.

I am pleased and proud to have been your Captain during this chapter in the history of BEALE.

CO's Message



LCDR F. J. CLEMENT, USN

Executive Officer

Lieutenant Commander Clement was commissioned Ensign following graduation from the United States Naval Academy at Annapolis on 4 June 1958. His first active duty was on board the destroyer GATLING in the Atlantic. In March 1960 he reported to the Commander Destroyer Division 253 staff at Pearl Harbor. From November 1961 until July 1963 he was Operations Officer of destroyer BAUSELL in the Pacific.

LCDR Clement was assigned to the joint Chiefs of Staff in Washington, D. C. until November 1965, after which he returned to sea as commanding Officer of USS Chesterfield County (LST-551). While in command of Chesterfield County, he completed 14 months overseas duty in support of logistic efforts in Vietnam.

Returning to Norfolk in March 1967, LCDR Clement reported to BEALE to assume his present duty as Executive Officer.

A native of Longmeadow, Massachusetts, LCDR Clement is married to the former Miss Sandra Hazen of East Longmeadow, Massachusetts. They live at 229 Overholt Drive, Virginia Beach, with their two sons, Edward and William Wallace.





LT J. HANLEY
WEAPONS OFFICER



LT W. MARSH
ENGINEERING OFFICER

Department Heads

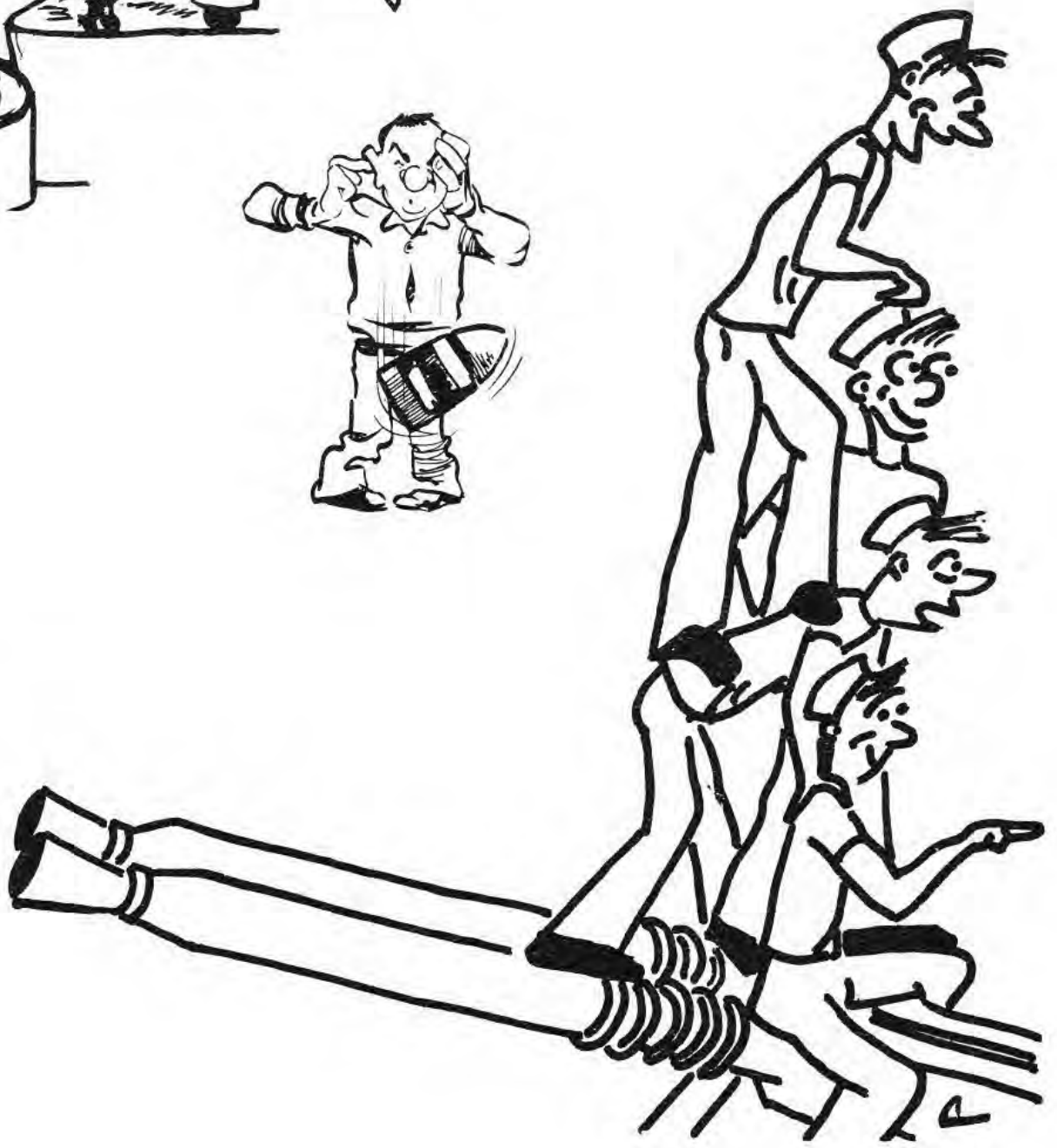


LT J. EGGERS
OPERATIONS OFFICER





Weapons





SN F. Baker



SN C. Basciano



SN R. Bloomfield



SN D. Connell



Controlling a Riot on the Forecastle.



SN E. Dobson



SN R. Fillmore



SN J. Huerta



SN J. Kuehl



Here comes the tightrope walker.



SN R. McDow



SN J. Mullin



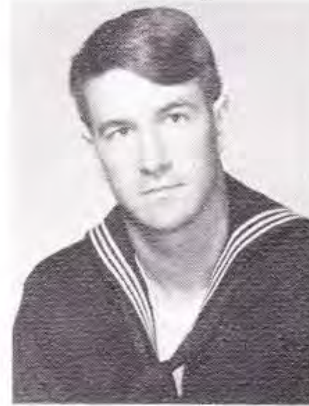
SN A. Odom



SN T. Pennell



Re-lettering the CASREPT.



SN G. Stanley



SN L. Steele

Here comes the Judge.





There goes Hively on his forklift.



SN F. Wiodues



SN N. Wray



SN R. Wright



SN D. Yadesky

Dancing on the green.



SA J. Gensicki



SA J. Huerta





SA P. Phegey



SA R. Satlak



SA D. Stanley



SA J. Weppler



Another fueling comes to an end.



SA D. Willett



Fill 'er up, Mac.

First Division



BM1 J. Thompson



ENSIGN T. BOTTIN



BM2 R. Albright



BM3 J. Maxwell



BM3 W. Markle

Throughout the Mediterranean Cruise, First Division was called upon day and night to help fulfill BEALE'S mission, The men of First Division always answered the call whether it was receiving fuel and stores, or manning the lifeguard detail through those long hours of plane guarding operations. Hundreds of Europeans were given a cheerful and thorough tour of the ship by First Division personnel, especially in Yugoslavia where BEALE'S good will and friendly gestures paved the way for future visits by Sixth Fleet ships. We all enjoyed the good times both ashore and at sea, but more importantly we learned about the countries and the and the people of Europe, an experience few enjoy. The men of First Division can be proud of the appearance of the ship in these waters and the smart manner in which they performed their duties. Upon our return to Norfolk, we were able to tell the story of an enjoyable and interesting cruise, one we will not soon forget.

Second Division



Intermural ping pong is serious business.



GMGC T. Stokes



GMG2 J. Gurney



GMG2 R. Rayfield



I will relay your wisdom to the bridge, Guru.



World War I civil defense warden and friends.



GMG3 L. Trachta



GMG3 A. Trumper



SN R. Anderson



SN R. Blishok



So you don't believe in sky hooks.



I wish they'd make the paint locker a little higher.



Look Ma, no hands.



SN L. Hawkins



SN B. Phelps



GMSN A. Schiltz



SA D. Draves



This funny thing came from the carrier, and we didn't know what it was - so we shot it down.



"I wish I didn't have to stand at parade rest during fuelings."

Fox Division



LTJG J. McAULEY



FTCS R. Flora



ST1 W. Aylward



ST1 G. Keene



STG1 D. Perryman



Mutt and Jeff.



STG2 L. Thurn



Maternity clothes style show.



FTG3 G. Day



STG3 G. Hammerstrom



STG3 S. Headman



TM3 C. Houk

Don't ever look up at Sea Gulls.





FTG3 G. Leichty

FTG3 R. Riedel



Tug of war.



Bag it!



FTGSN R. Boyles



STGSN D. Chutney



STGSN R. Dorn



FTGSN T. Kendrick

FTGSN R. Lucas

STGSN E. Whitacre



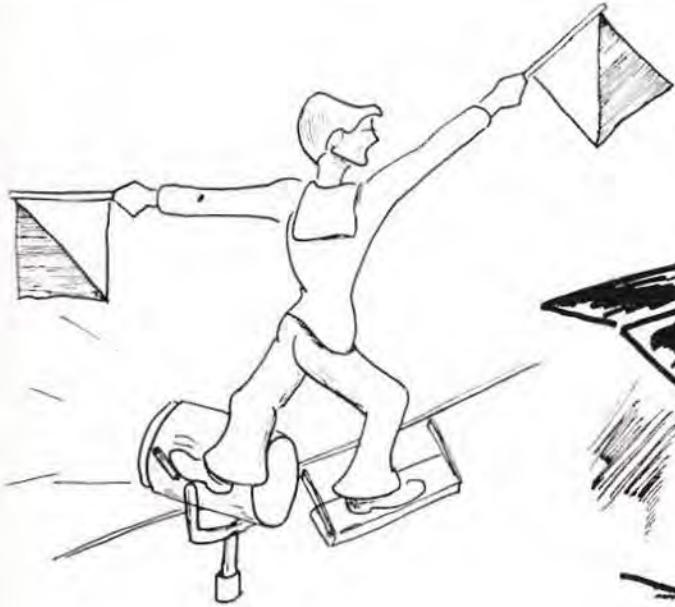
Mountain climbing was a big sport.



SN E. Wright

SA P. Judd

Operations Department





RM3 G. Gaynier



SM3 C. Lynn



SM3 R. Phillips



SM3 G. Prausa



RM3 J. Tillman



RMSN W. Wilson



SA F. Bludis



I don't know whose calling but they keep calling us Stupid Earthlings!

OE Division



RM1 J. Gardner



SM1 J. Kucenski



RM2 G. Casey



LTJG W. DALEUS



SM2 B. Harrell



RM2 J. Spofford



RM3 D. Brewer



RM3 E. Butler





LTJG M. RENNE

OJ Division



RD2 M. Forsher



RD3 R. Nichols



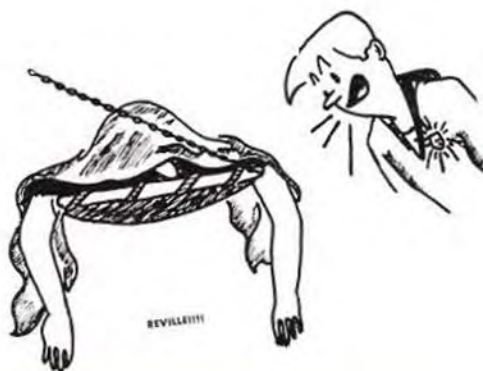
RD3 T. McCullough



SN A. Lemus



RDSN H. Cooper



ON Division



ENSIGN C. BURCHELL



YN1 R. Bosche



HM1 R. McCombe



ETR2 R. Johnson



QM2 E. Zurweller



YN3 G. Berman



QM3 D. Sexton



QMSN R. Baluha



SN T. Duncan

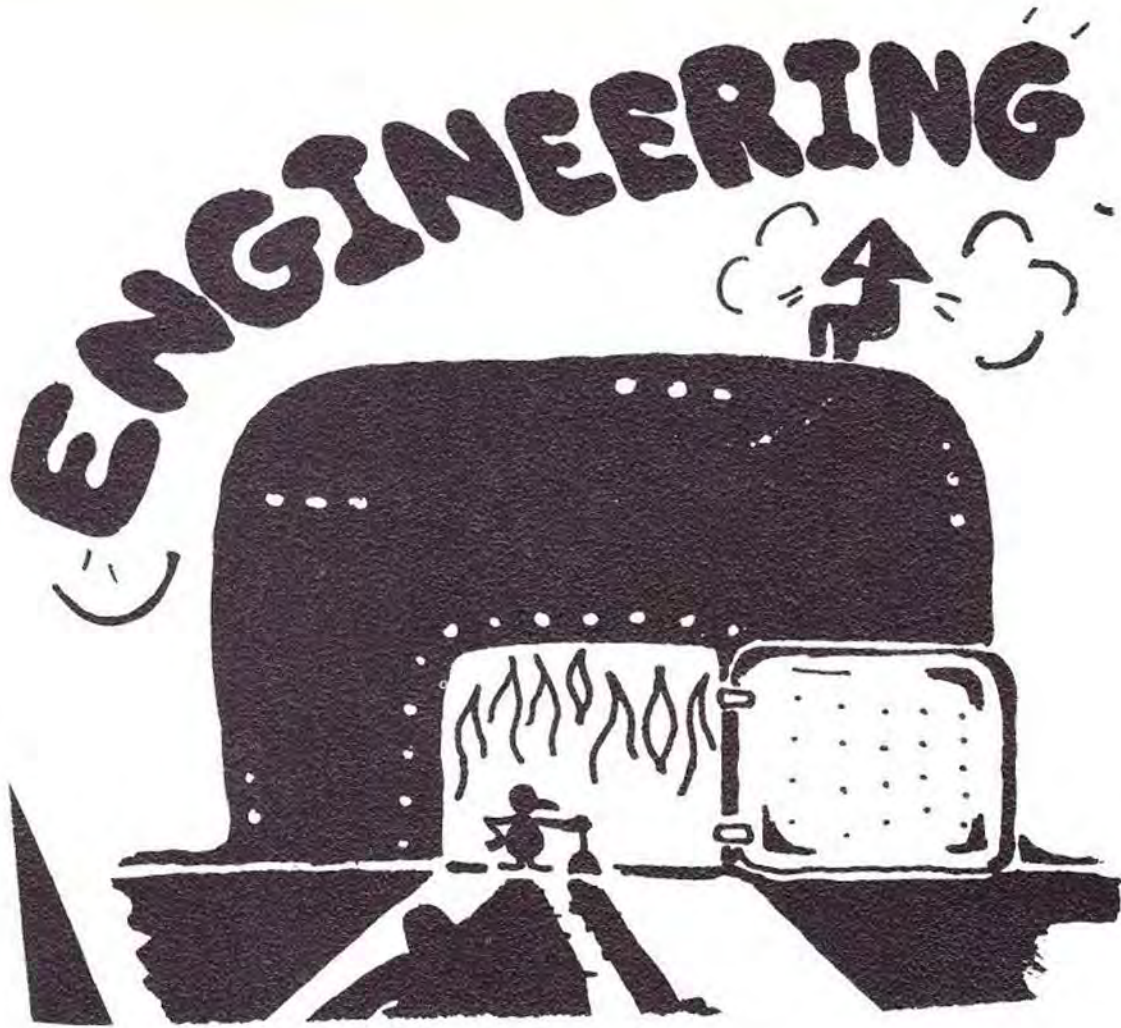


PNSN S. Pulik

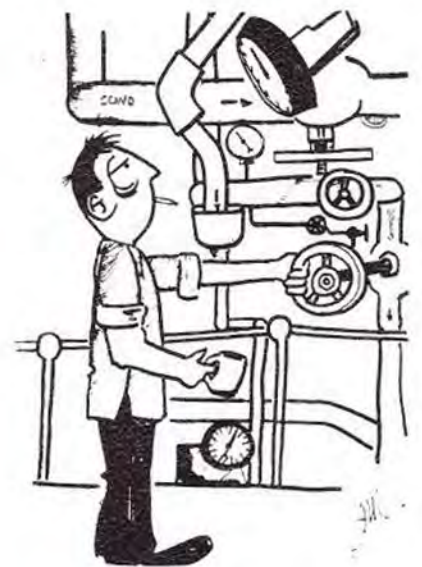


SN P. Roy





Thanks for the Oil....



R Division



ENSIGN W. FULLERTON



It says right here, 'reading on watch is prohibited'.



Big brother is watching you.



IC1 G. Millard



IC2 J. Wunsch



IC3 J. Bennett

IC Men



ICFN C. Altwies

ICFN T. Mahoney



I'm taking my plaque and going home.

Every man a TIGER



Shipfitters



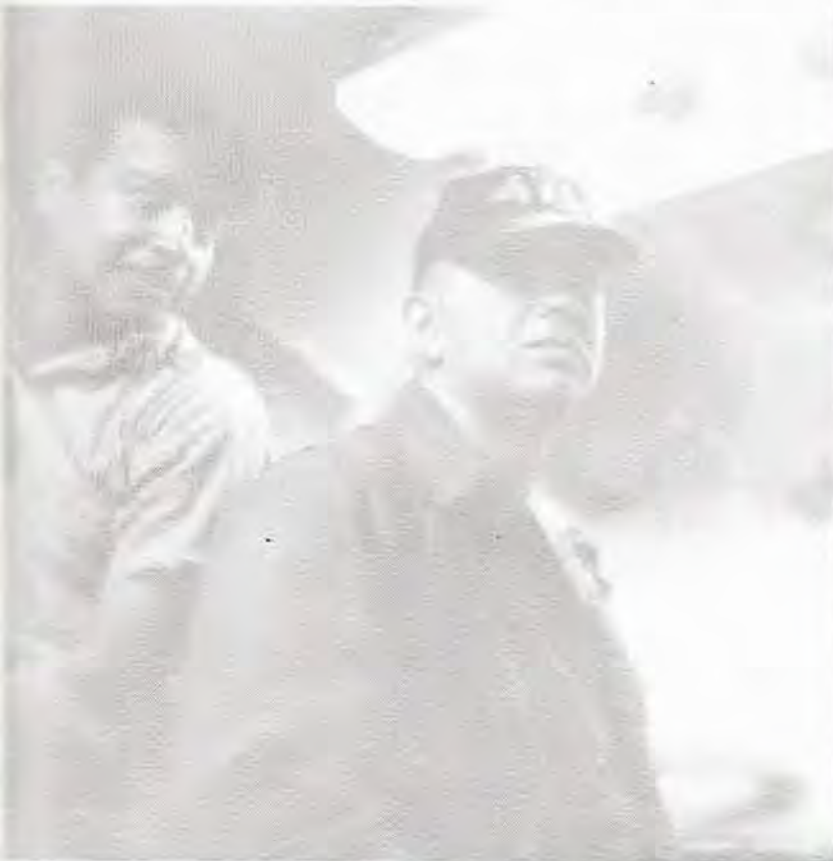
SF1 J. Walker



SFM2 E. Harper



DC2 C. Stagg



How 'bout a drink?



In here we keep the booze.



Say one more bad thing to me and you'll never see your laundry again!



DC3 R. Christian

SFM3 J. Spencer

FN S. Sandoval



On the job training in door opening.

Bringing home the bacon.





EMC D. Lambert

MM1 J. Manley

EM2 J. Chomoa

EM2 M. McGoey



MM3 J. Albrecht

EM3 J. Erickson

EM3 P. Towns

SN J. Arriola



FN D. Blumenberg

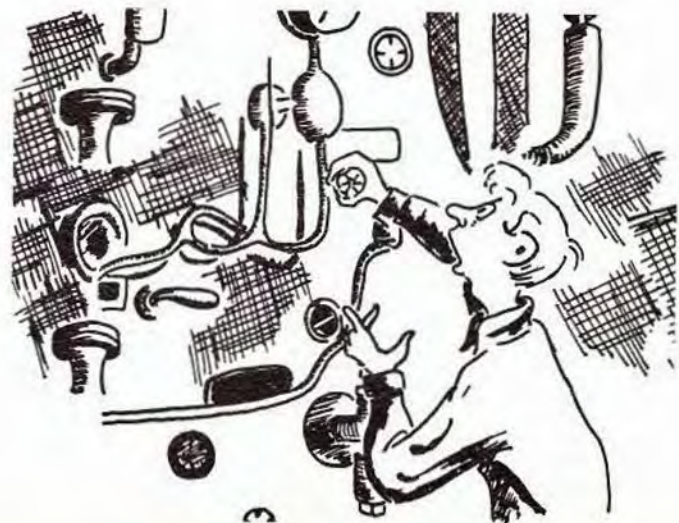
FN R. Heitzcarater

ENFN P. Michaud

ENFN J. Whiteside



FA K. Sivels





LTJG C. HUNNELL



ENSIGN R. ROGERS

M
Division



MMCS J. Manganan



MM1 H. Chamberlain



MM2 C. Clapham



MM2 C. Maas



MM2 P. Porter



MM3 R. Bickford



MM3 S. James



MM3 R. Judkins



MM3 L. Ramsey



MM3 P. Reich



MM3 K. Nichols



MMFN J. Brown



FN J. Bell



FN W. Boufford



FN P. Browning



FN R. Deiter



FN A. Hungerford



MMFN J. Hunter



FN C. Rawdle



MMFN R. Schweitzer



FA C. Freeman



MMFA J. Nuccetelli



MMFA J. Seal



FA D. Wallace





BT1 W. Brings



BT2 L. Bozeat



BT2 J. Tillery



BT3 R. Burton



BT3 T. Fausett



BT3 R. Lembo



MM3 J. Mooney



BT3 T. Regan



FN K. Blandford



BTFN W. Offerman





BTFN R. Clous



FN L. Knoblock



FN B. Whithall



BTFA R. Clous



FA R. Foote



BTFA C. Schleppey



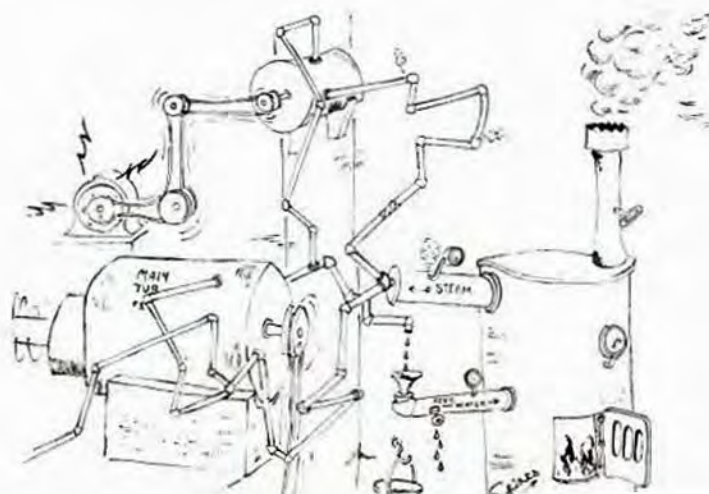
FA D. Wetherford



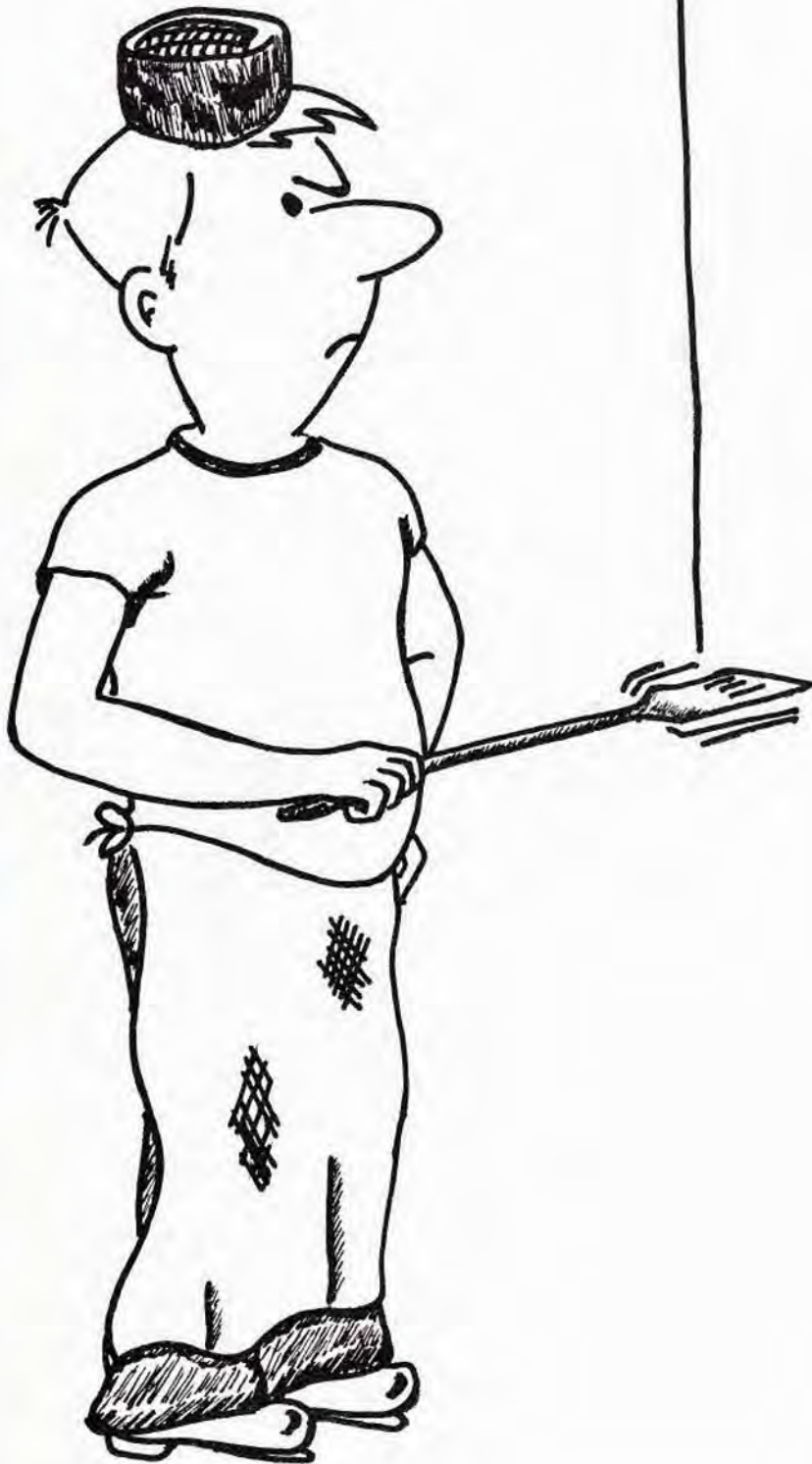
MMFA C. Williams



BTFA G. Wise



Supply



Department





W. Gray

SD1 B. Abad

SD2 P. Bugaoisan

CS2 R. Owens



F. Bautista

SN S. Brooks

TN M. Guinto

SN J. Harrison



CSSN T. Nicholson

TN R. Quicho

SN R. Seneres



"I'd like to speak to someone in charge."



SH1 C. Lucas



CS2 S. Henry



SH2 B. Hively



DK2 P. Michaud



SK2 R. Simmons



SK3 J. Castleberry



CS3 L. Hardy



SN R. Grant



SN T. Kenny



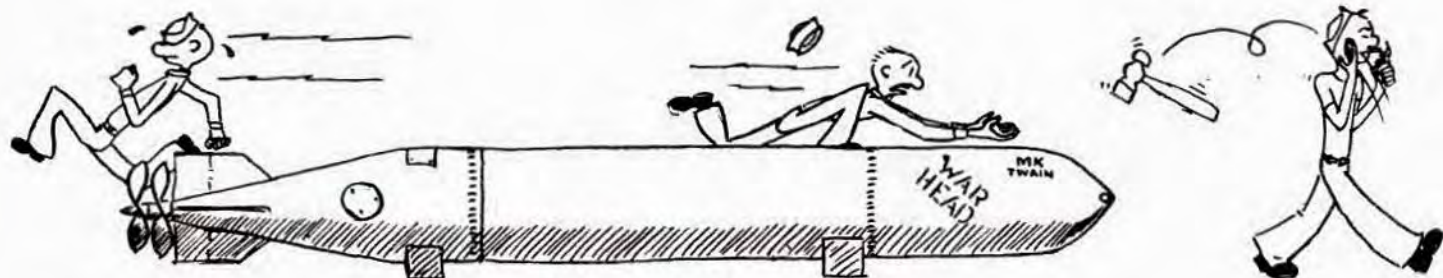
SHSN J. Reilly



SKSN J. Vargas



SN N. Wishnetz





Hard charging officer.



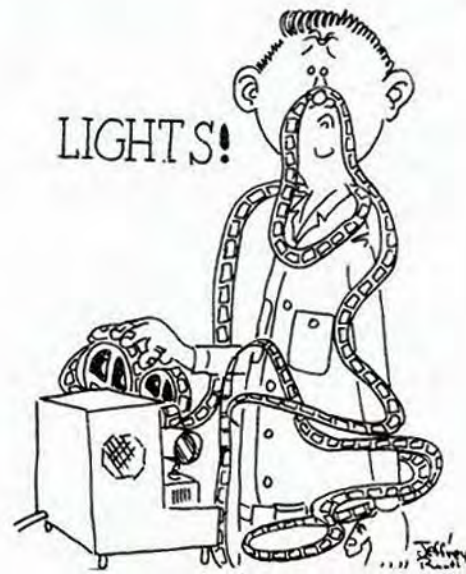
The steam calliope.



Jet pilot.



For our next number . . .

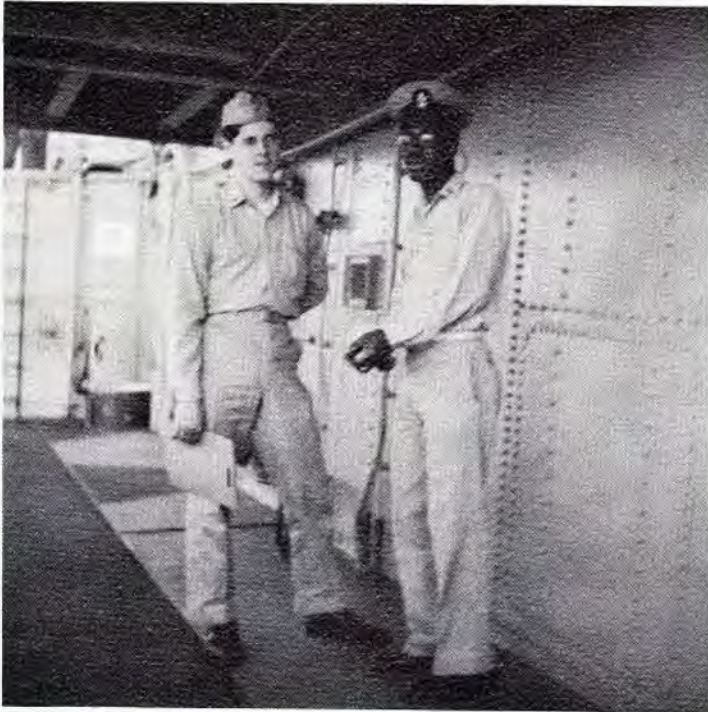




“ Sure this is where you steer the ship.”



“ Any more trouble and I'll shoot you.”



STEAMERS



Sandman victim.





Take a strain.



A cozy nook in the ships' library.



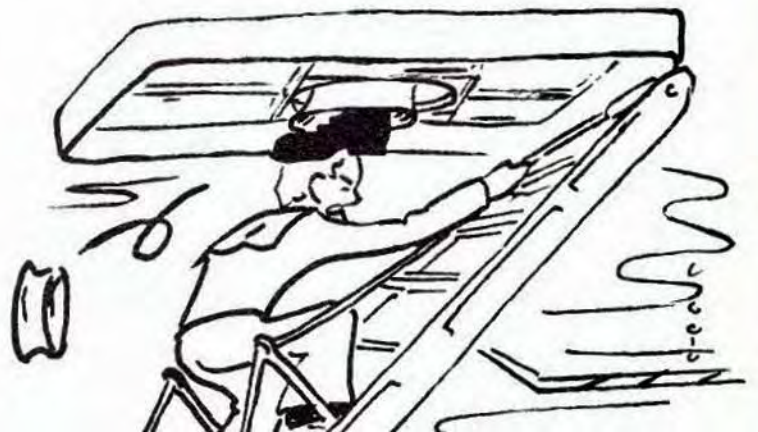
Keeping juice at an arm's length.



Workers and Drones.



Welcome to the hole.

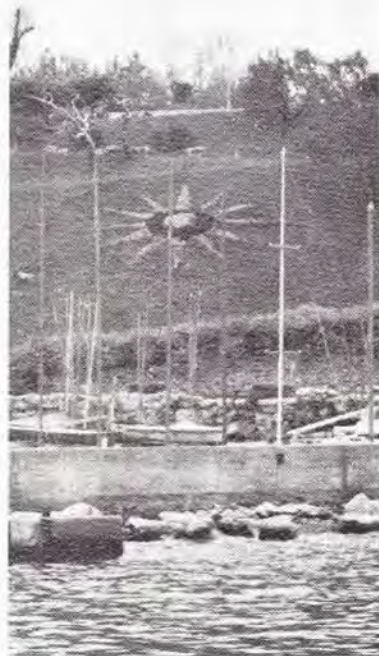
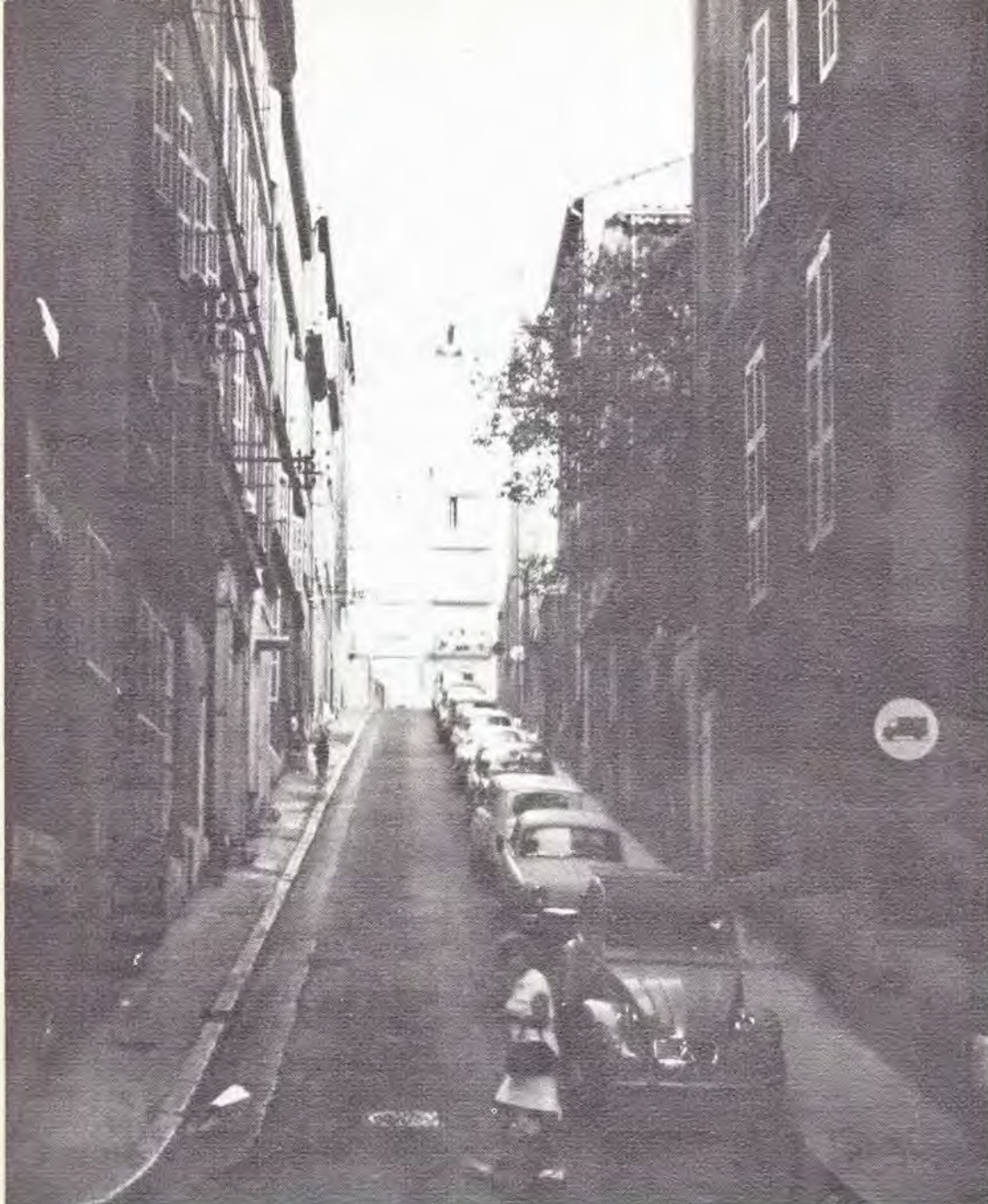




Marseille





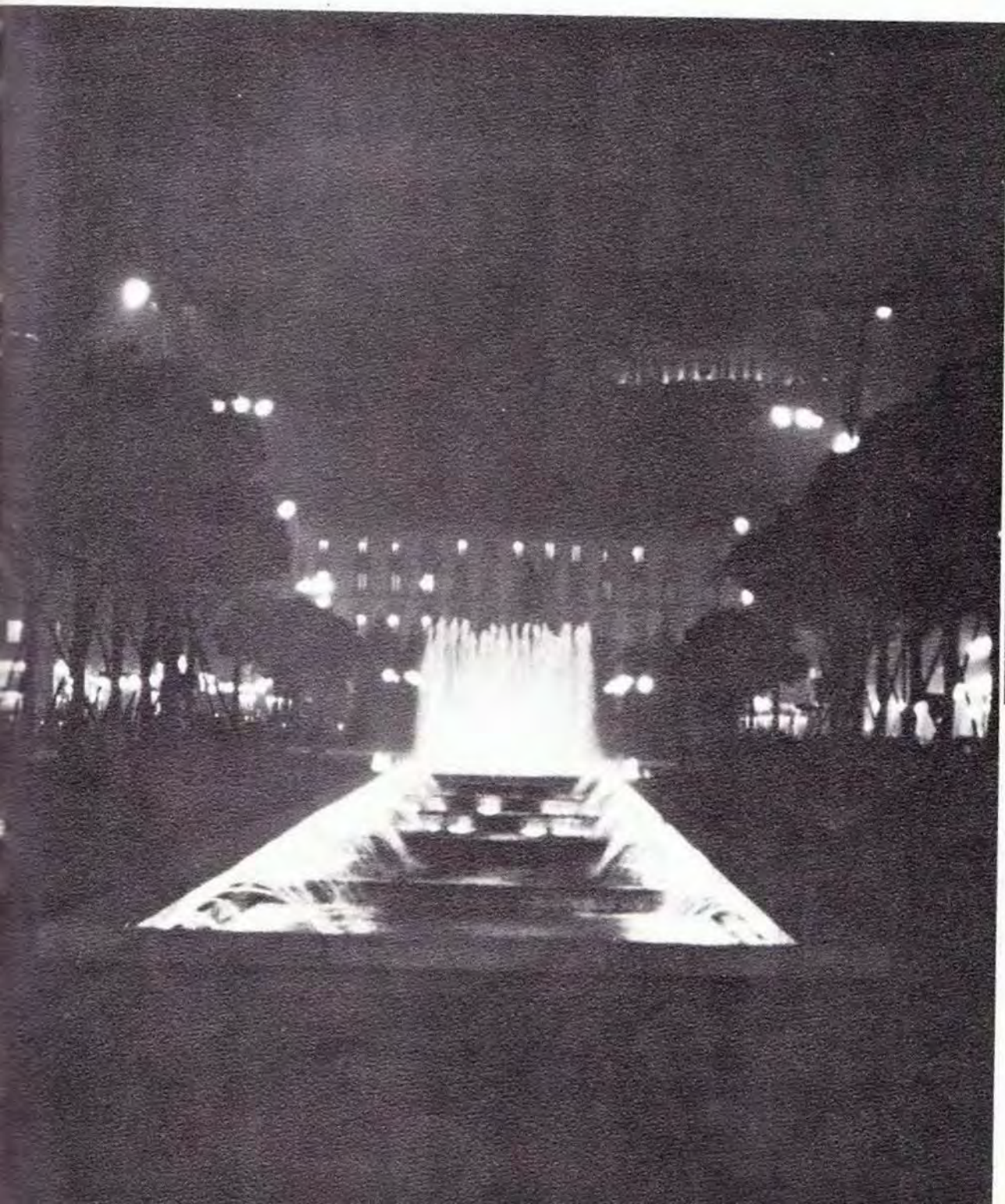


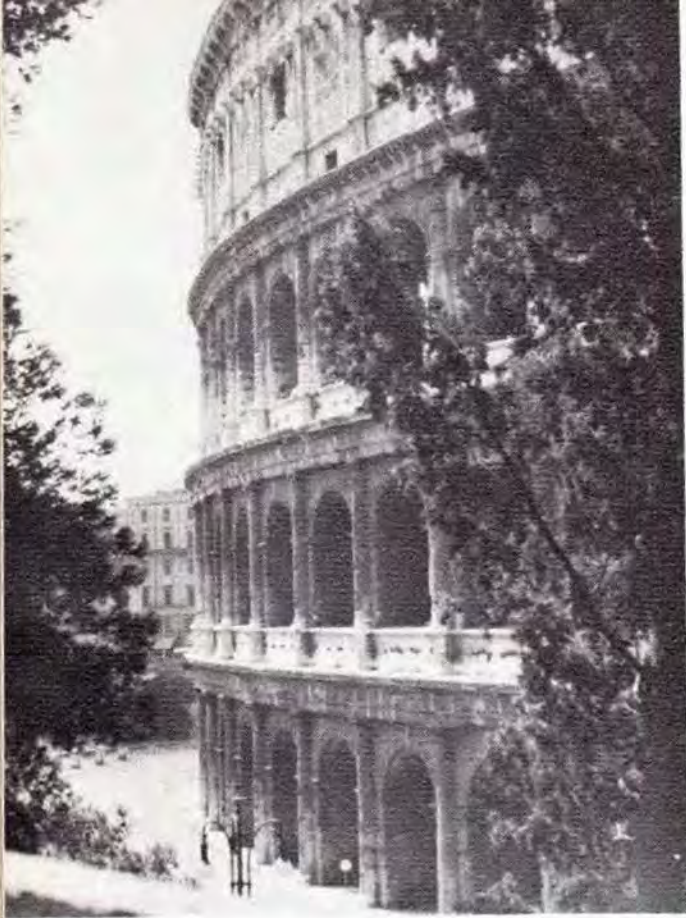


Naples









Rome









Yugoslavia







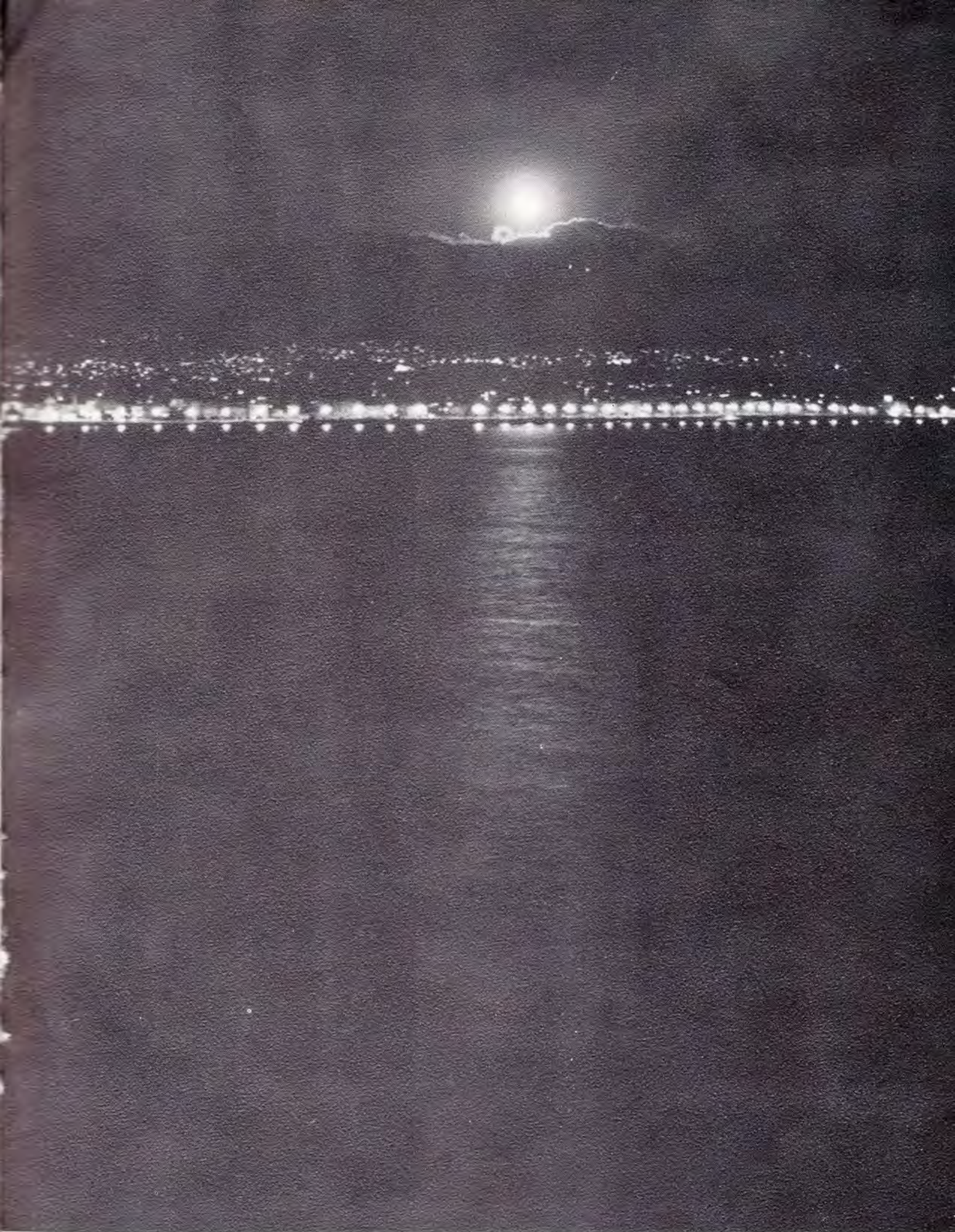
Malta





Malaga





We bid the Med a fond farewell.



USS Bache (DD-470)



315 COLLEGE AVE