

USS BEALE DDE 471



The USS BEALE (DDE-471) was named after the late Lieutenant Edward Fitzgerald Beale, USN. Launched on 14 August 1942 at Staten Island, New York, and christened by Miss Nancy Beale, great grand niece of Lieutenant E. F. Beale, the BEALE was commissioned as the DD-471 on 23 December 1942, at the New York Naval Shipyard.

The Beale's battle career began in the Asiatic-Pacific Theater on 16 August 1943 in the Amphibious operation at Kiska. Participation in air and surface battles, ranging from the New Guinea Operations to the bombardment of Okinawa Gunto, marked the sea career of this gallant destroyer. Despite enemy fire and plane attacks the BEALE emerged without damage or casualties among the personnel.

In January 1947, the BEALE was inactivated and assigned to the Atlantic Reserve Fleet, Charleston, South Carolina. At the Boston Naval Shipyard in November 1951, she was recommissioned DDE-471.

The BEALE operated along the east coast of the United States, and in the Mediterranean and Caribbean Seas for

the next five years. In 1955 the Beale along with other ships of Escort Division 22 operated with the USS NAUTILUS, the world's first nuclear powered submarine, for evaluation and ASW Training.

In March of 1957 the BEALE departed Norfolk for the Persian Gulf by way of Africa, and returned through the Mediterranean. During the BEALE'S cruise more than 42,000 miles passed beneath her keel as she visited 14 countries.

On March 1, 1958 the BEALE became a part of Task Group Alfa, a force whose sole aim is to develop new and improve old techniques and tactics in the art of Anti-submarine Warfare.

The BEALE is 376 feet long and 39 feet wide. Its main battery is dual purpose 5" mounts. For anti-aircraft she also has twin, rapid fire, 3" mounts. She is designed primarily for warfare against enemy submarines. She is capable of speeds in excess of 30 knots. The BEALE at present carries approximately 230 enlisted men in her crew and 14 officers.



DAVID A. JOHNSON
COMMANDER

The Commanding Officer, David A. Johnson, was born Washburn, Wisconsin. At the outbreak of World War I he was attending the University of Minnesota but left to enlist in the Navy. He served as a Pharmacist's Mate before entering officer training at Columbia University where he graduated and was commissioned as Ensign in 1943.

During World War II he had command of motor torpedo boats and participated in various battle campaigns in the Pacific. Assignments since World War II have included gunnery instructor, Commanding Officer USS LSM 1 and LSM 399, Executive Officer USS BLACK (DD 660) and staff duties. Among the medals he has received is the Purple Heart.

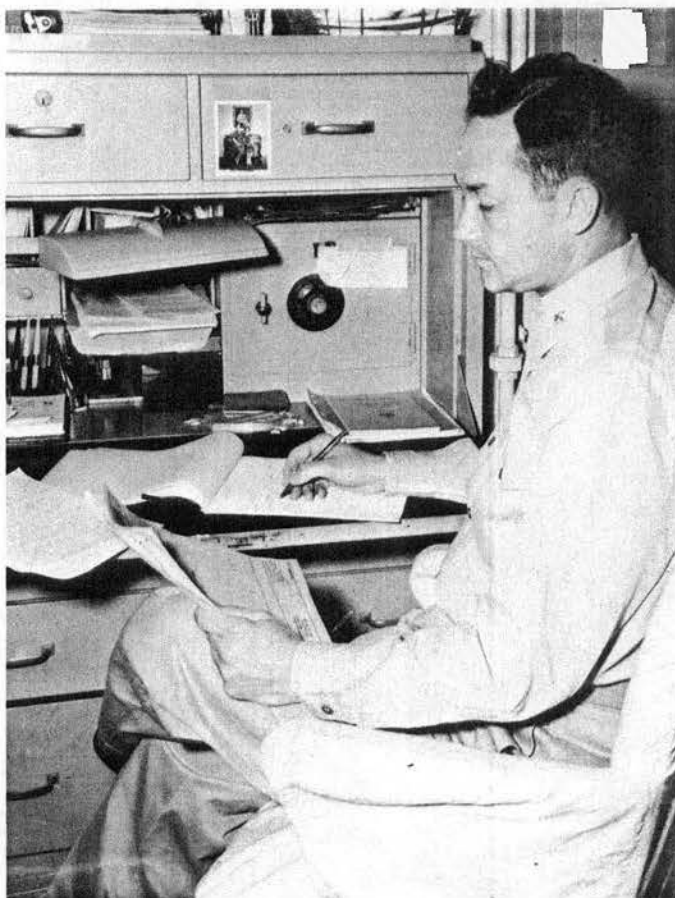
Commander JOHNSON assumed duty as Commanding Officer of USS BEALE on November 12, 1960.



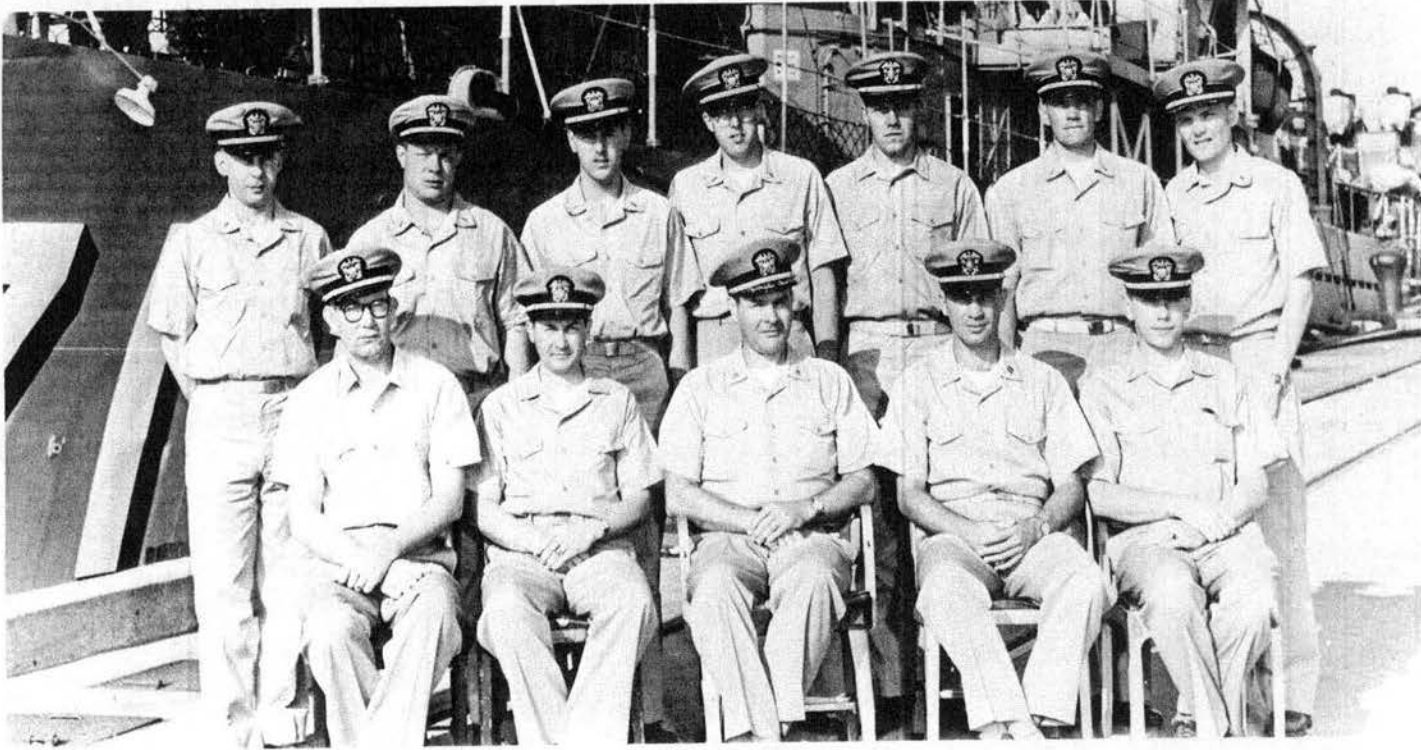
ROGER E. MELICK
LIEUTENANT COMMANDER

The Executive Officer, Lieutenant Commander Roger E. Melick, was born in Marshalltown, Iowa. After Pearl Harbor he left Junior College and enlisted as an Apprentice Seaman. He advanced to yeoman first class and then was transferred to the Officer Training Program, finally to graduate from Marquette University and be commissioned as Ensign in 1945.

He served on the destroyer DORAN, FRANK, KNOX and W. OLE. Some other assignments have been on cruisers, COMDESPAC, U.S. Naval Postgraduate School, Armed Forces Staff College. LCDR MELICK was awarded the Navy Commendation medal with combat device for actions in Korea.



OFFICERS



Left to Right—LT Catoe, Engineering Officer; LCDR Melick, Executive Officer; CDR Johnson, Commanding Officer; LT Martin, Operations Officer; LTJG Mazeika, Gunnery Officer; LTJG Saari, MPA; ENS De Santis, ASW

Officer; ENS Webb; ENS Burdett, Communicator; ENS Benson, Sup Officer; LTJG Johnson, CIC Officer; ENS Nelson, DCA. Not in Picture ENS Hollmer, ENS Keeley, ENS Springstead, LTJG Henry.



Chits, chits, and more chits



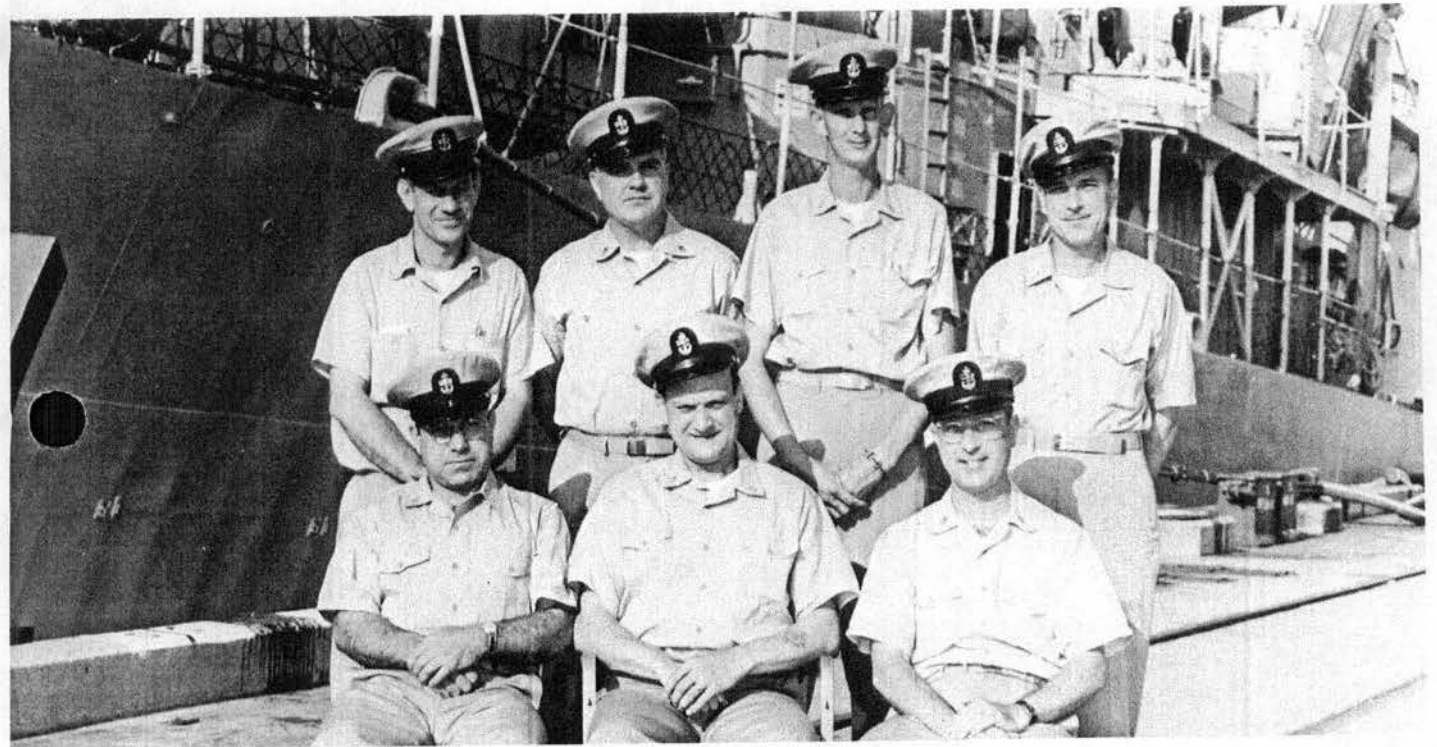
But Mr. Catoe, this isn't the old navy

All the comforts of home





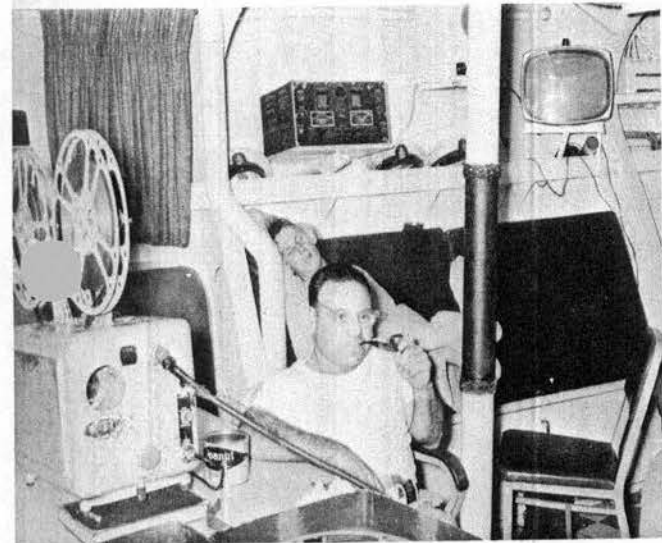
CHIEFS



Left to Right—First Row—Burrell, G., SFC; Rimi, F. C., RMCS; Gainor, R., JMC. Second row—Ogrysko, S., MMC; Hancock, C. D., CSC; Scott, E. R.,

EMC; Rabourn, C. O., MMC; Not in Picture—Taylor, J. W., GMC; Salmon, M. L., BMC; Benzel, R. A., RDC.

Meanwhile back on the ranch



Now back on the Mississippi we used to . . .



Shooting the sun

M DIVISION



MM
MACHINIST'S MATE



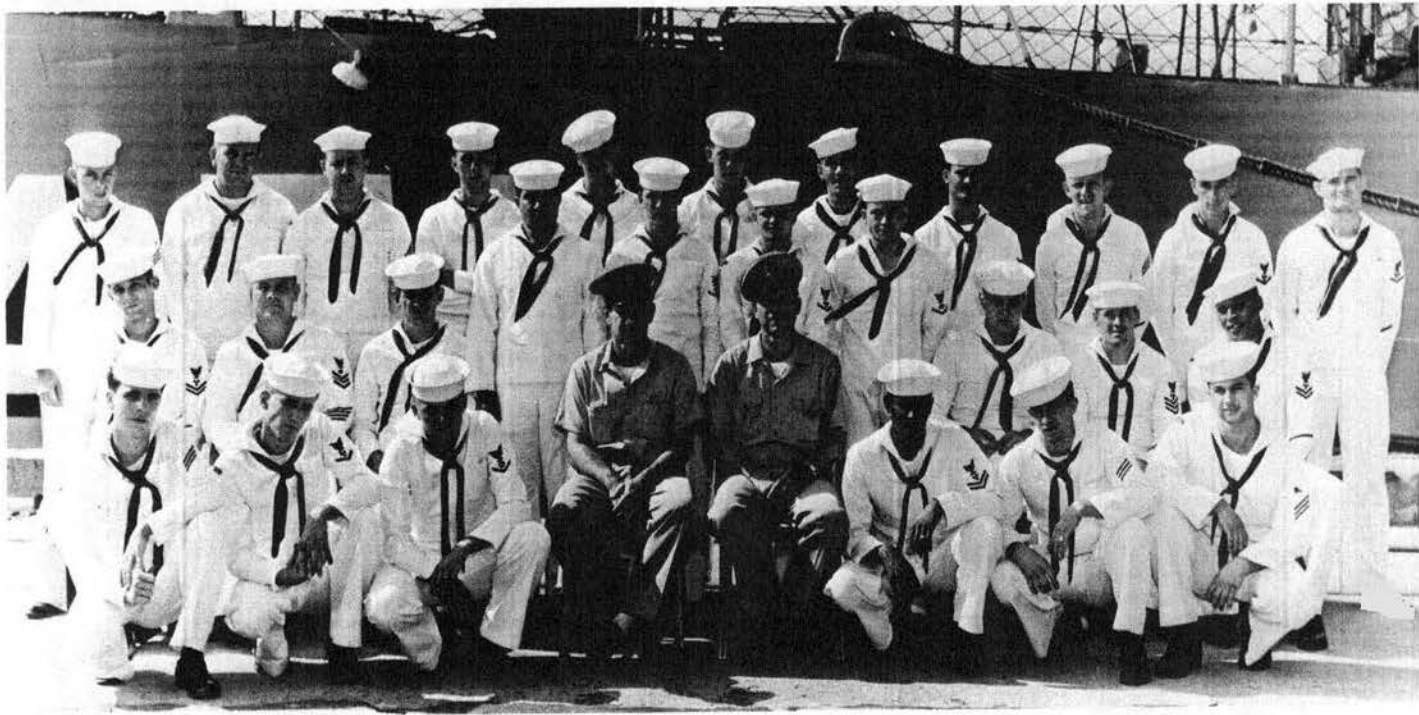
EN
ENGINEMAN



MR
MACHINERY REPAIRMAN

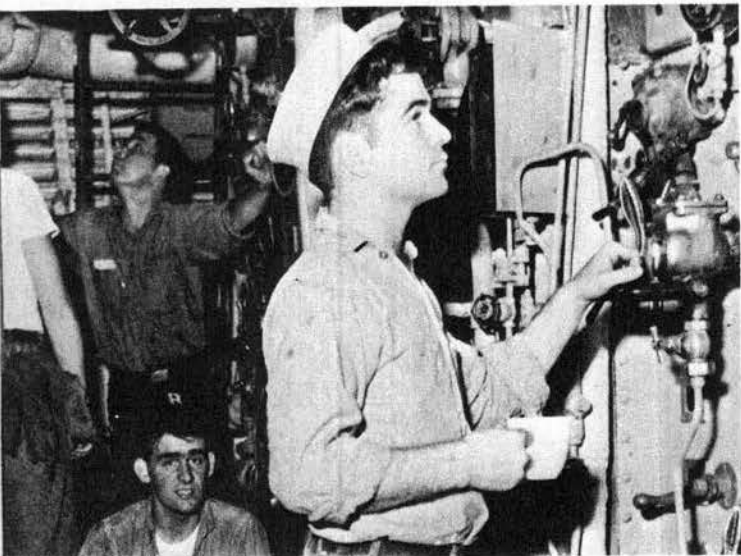


BT
BOILERMAN



Left to Right—First row—Seitz, G. A., FN; Hendricks, J., MM3; Maye, M. J., EN3; Ogrysko, S., MMC; Rabourn, C. O., MMC; Johnson, L. F., MM2; Shank, R. L., FN; Daviso, A. W., FN. Second row—Clyborne, R. J., MM2; Yandel, K. G., BT1; Brown, R. R., MM2; Trevino, E. V., SN; Rushing, J. L., MM3; Hilleary, J. L., MM3; Duncan, J. S., BT3; Zahm, J. S., MM2; Bailey, E. R., MM1; Grant, J. J., MM2. Third row—Umbrage, D. H., FN; Fudge, D. W., BT3; Reid, M. L., FN; Miller, D. B., MM3; Welton, G. P., FN; Carver, J. A., EN3; King, R. G., FN; Tuttle, J. W., EN3; Whitebread, G. G., FN; Dow, D. M., MM3; Delatte, J. W., MM3. Men not in Picture—Bailey, W. D.,

FN; Huff, B. G., BT3; Taylor, T. M., BT2; Lippard, E. V., BTFA; Lyles, FN; Sylvester, R. L., MM2; Glow, D. J., FN; Stuck, J. L., MM3; Bow W. C., MM3; Linville, H. O., BT2; Holbrook, R. W., BT1; Lynch, D., (N) B Silva, A., MMT; Finch, A. K., FN; Martinez, M. R., FN; Flugger, J., B Chaffin, W., FN; Hoppes, J. W., FN; Gunter, G., FN; Stark, L. O., B Childers, O., FA; Gould, R. C., BT2; Spangler, J. L., BT3; Settles, FN; Don S., FN; Lowe, J., FN; Sauers, D. L., SN; Stepping, H. A., SA; Pa D. H., SN.



In the fireroom you find heat, sweat, and snipes

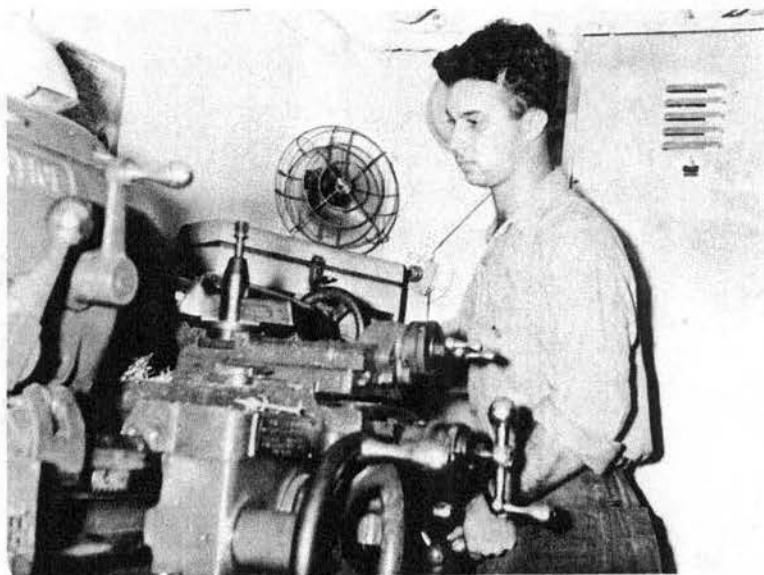
Mother told me there would be days like this



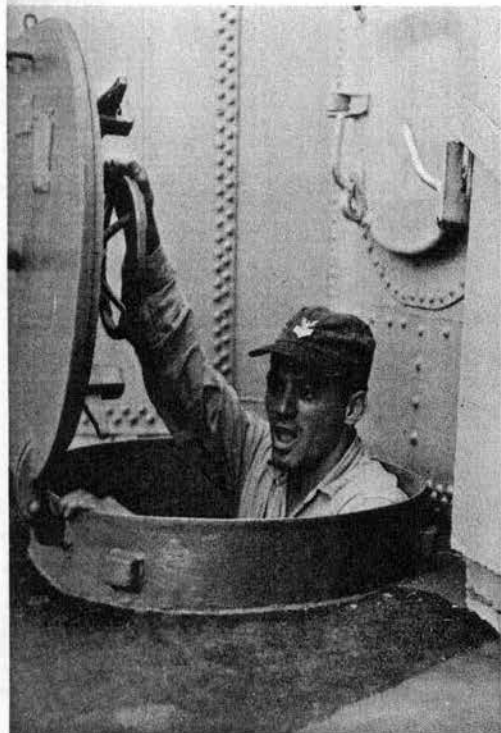
Get back in the hole!



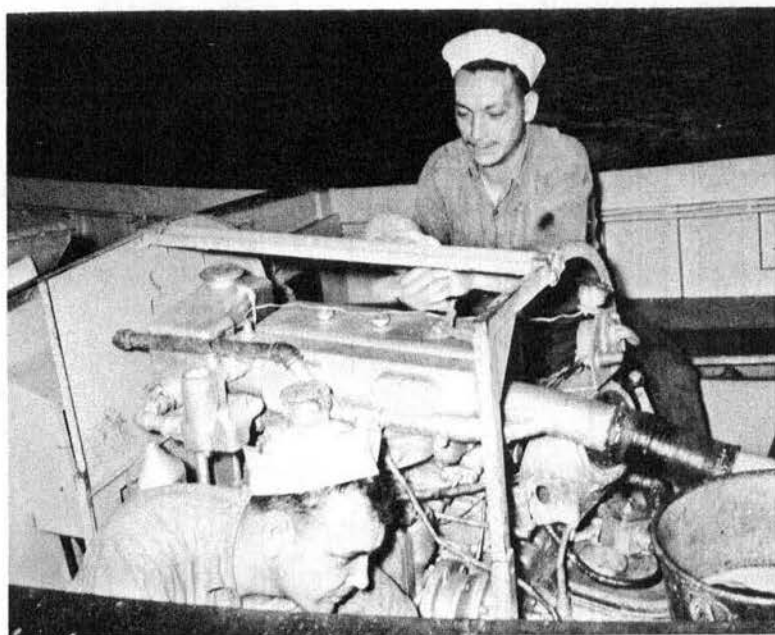
We had a little turbine trouble



If we don't have it, then our MR makes it



'hoo! It's hot down there



Maybe she's not much on speed but she runs like a top

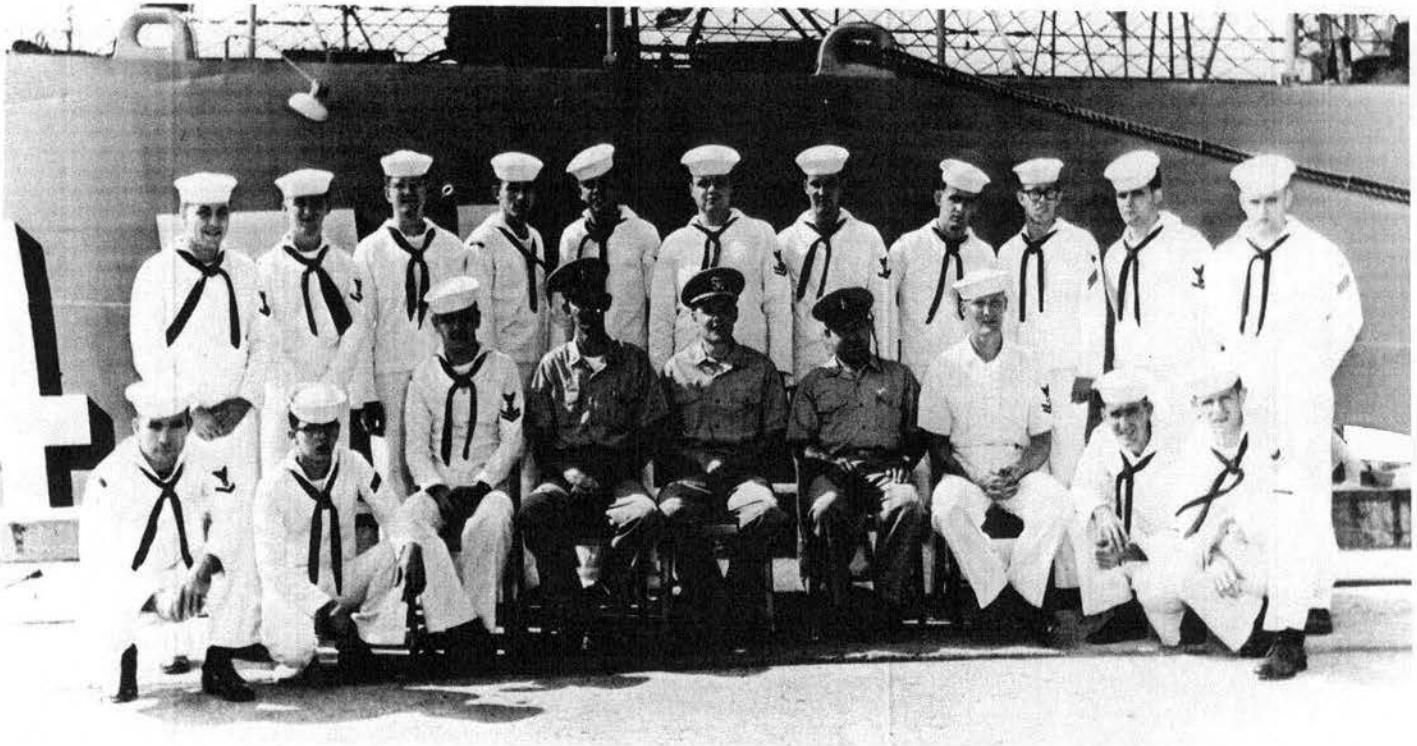


Of course I know what all these gauges are for



They won't let us blow tubes

R DIVISION



Left to Right—First row—Weed, W. L., SFM3; Yandola, N. F., DCFN; Goodrich, F. B., EM2; Scott, E. R., EMC; ENS Nelson; Burrell, G., SFP; Zeigler, C. R., SFP2; Reynolds, R. P., FN; Wedding, W. E., IC2. Second row—Fincham, R. R., EM3; Wisner, W. A., SF3; Standish, J. P., EMFN;

Montz, R. W., EM3; Devonshire, N. E., SFM3; Loudenslager, R. D., EM Helton, S. E., EM3; Blatney, J. L., DCFN; Meredith, I. J., ICFN; Sanche Jr., EM3; Patrick, C. E., DCFN. Men not in Picture—Moser, A. E., FI Johnson, T. N., ICFN; Quigley, P. J., FN; Hulme, W. R., FN.

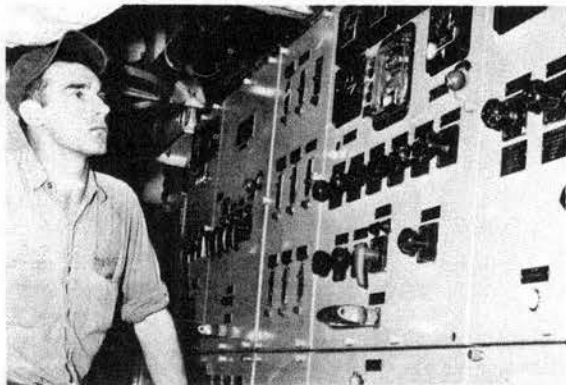


I wonder if I can hit my finger



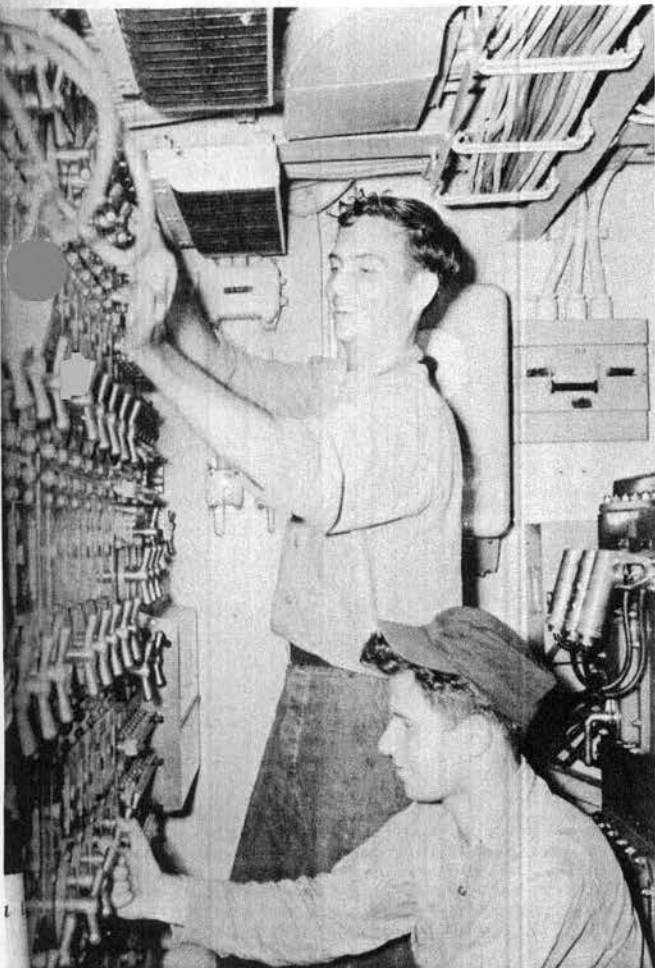
You'd think that after 18 years there wouldn't be a thing left to weld

Eternal Vigilance

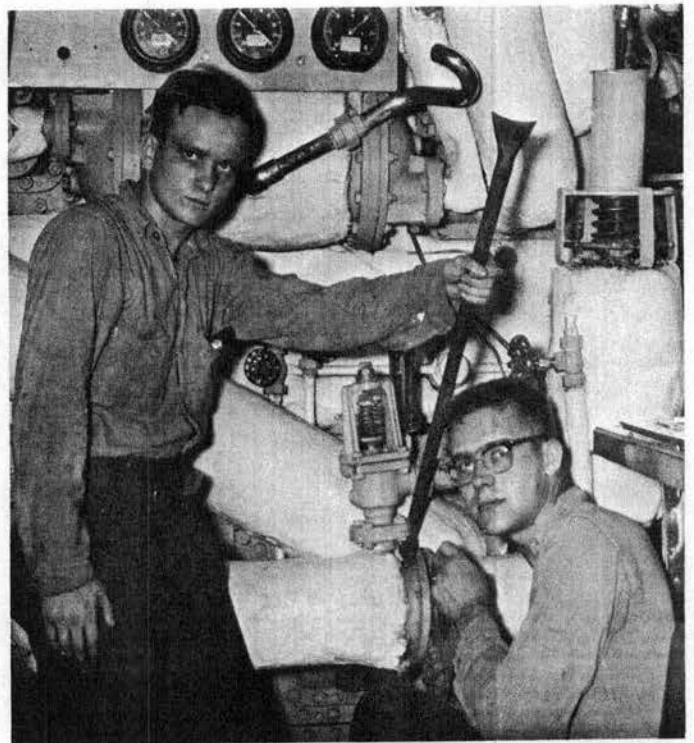




Emergency priority project: Coffee mess for EM's

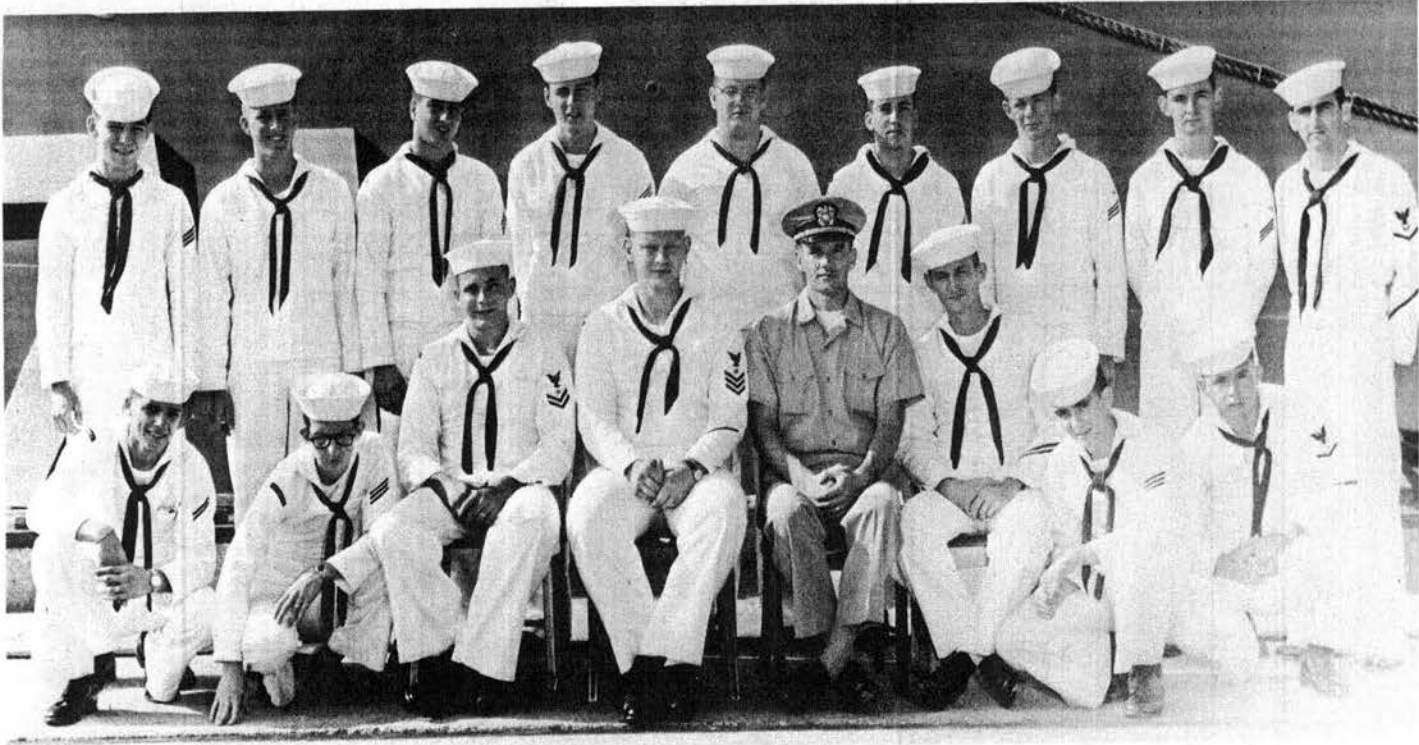


The Navy can be fun



Just goes to show you if you give a snipe a big enough wrench he can take apart anything

OI DIVISION



Left to Right—First row—Campbell, T. E., SA; Dillon, C. E., SN; Nuckols, O. F., ET2; Vanderkleed, W. J., ET1; LTJG Johnson; Whitford, Z. O., PN1; Sabatella, F., SN; Hollis, W. J., RD3. Second row—Marschner, H. F., RDSN; Dietsch, K. R., ETNSN; Wilder, P. J., RDSN; Winkelbauer, C. W., ETNSN; Santa Cruz, R. C., RD3; Tidwell, J., RDSN; Lorenc, A., ETNSN; Kelly, K.,

RDSN; Paynter, D. E., YN3. Men not in Picture—Fisher, W. N., YN Marcos, F. A., SN; Fulton, N. A., RD3; Moore, M. F., RDSN; Culpepp R. L., RD3; Chafen, J. E., RDSN; Medlin, R. L., YN3; Benzell, R. A., RC Curp, R. A., RD3.



The Pepsodent twins



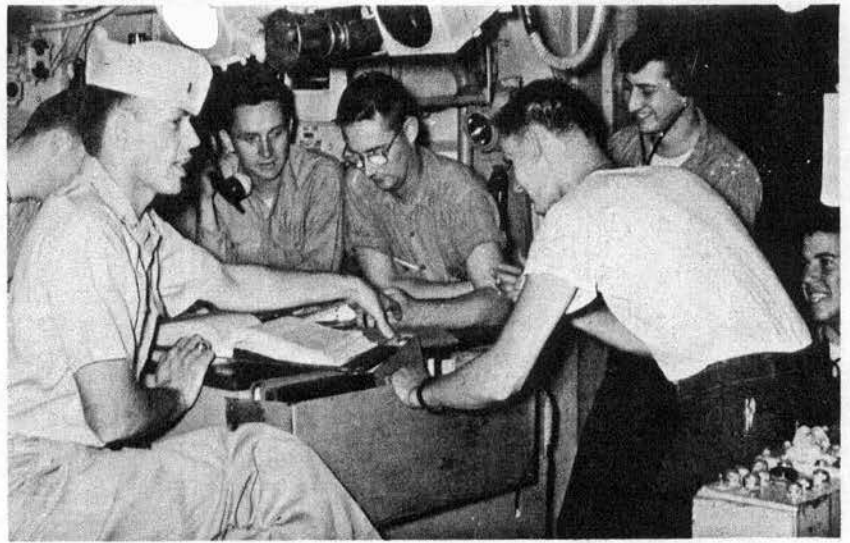
You can start on these



The "Enchanting Times" 258 loyal readers



That circuit is all right

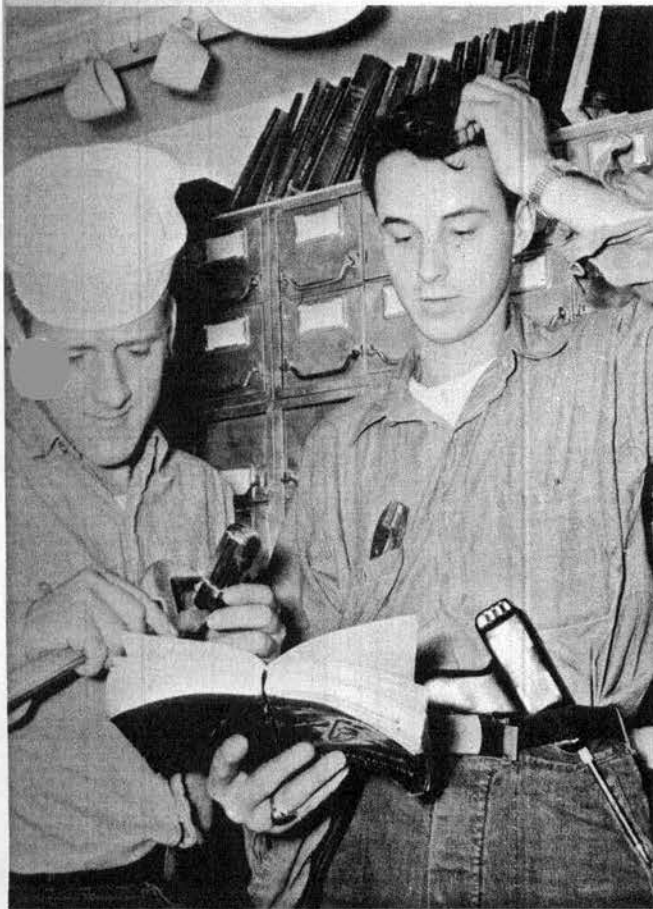


Next time don't think, look it up

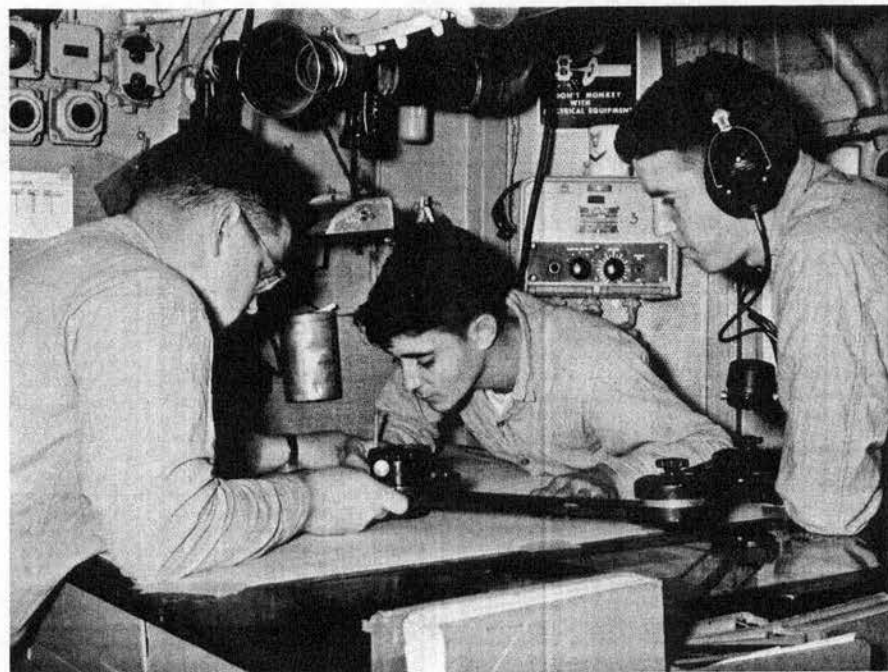


Can you write backwards?

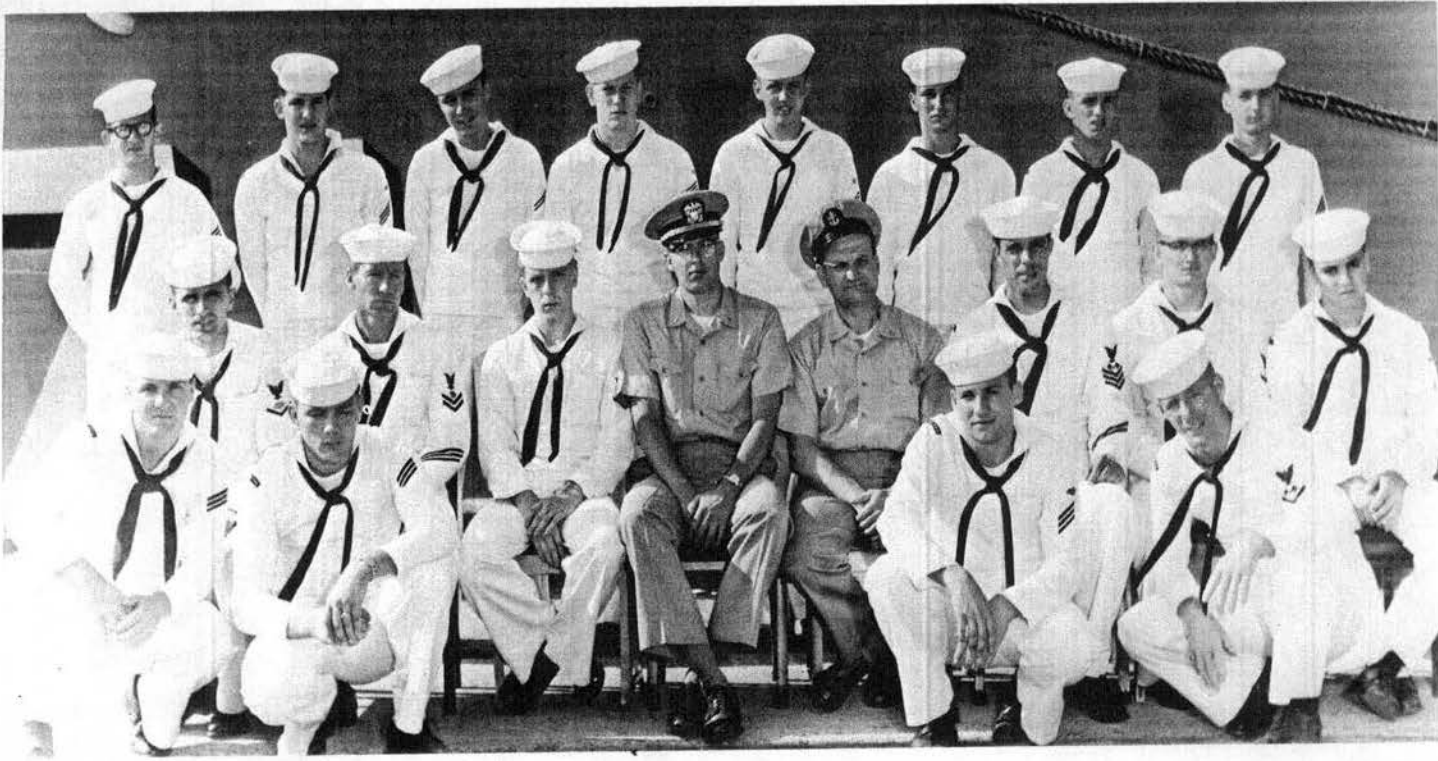
The Bache bears 267°, 50 yds.



Some how this just doesn't look right

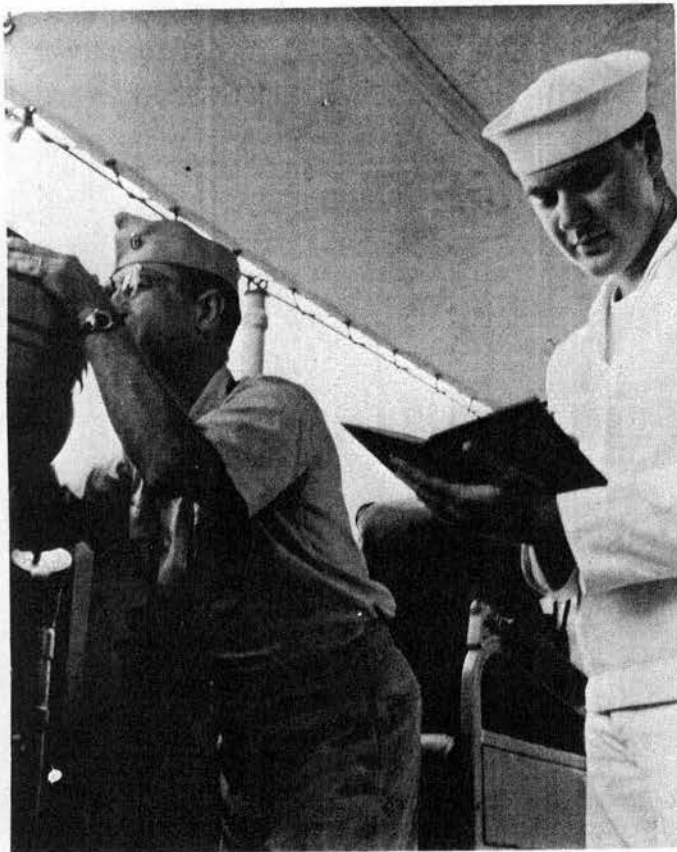


OG-DIVISION



Left to Right—First row—Smith, G. F., SN; Wiench, F. A., RMSN; Herbert, R. E., RMSN; Weston, H. A., SM3. Second row—Frederick, M. A., RM3; Arney, F. A., QM2; Sipe, J. H., RM3; ENS Burdett; Rimi, C. F., RMCS; Guidry, P. J., SM1; Houghtaling, F. A., RM3; Baccino, R. M., SMSN. Third row—Campbell, J. S., SN; Kiptmiller, G. W., RMSN; Tyler, K. R.,

SA; Williams, J. P., SN; Mitchell, C. D., RMSN; Robinson, B. H., SMSN; McGovern, G. E., SMSN; Stackpole, R. B., SN. Men not in Picture—Scherer, L. B., RM2; Bankhead, D. J., QM3; Evdemon, M. C., RM3; Gainor, R., QMC.

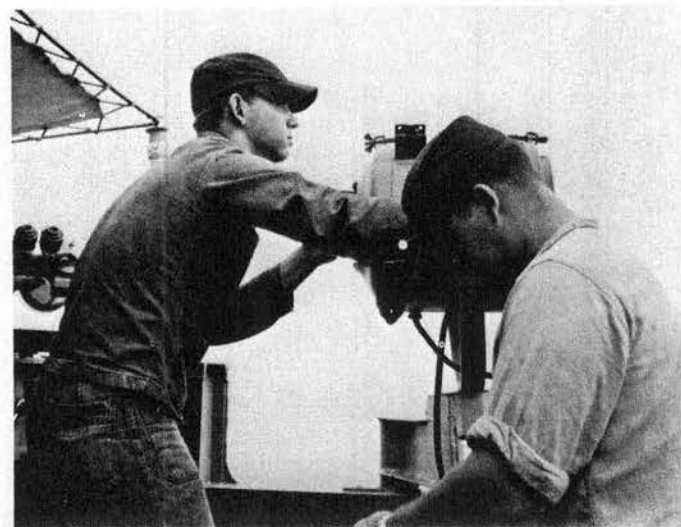


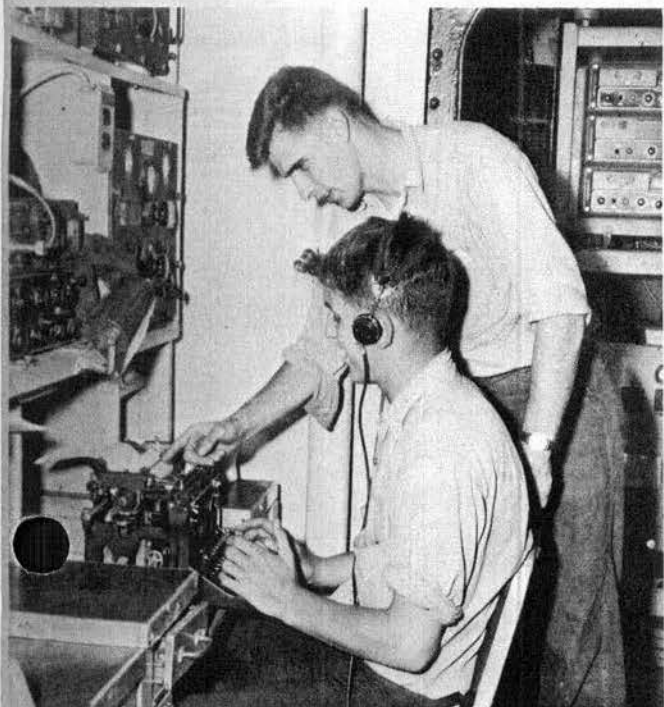
The tower bears 273°



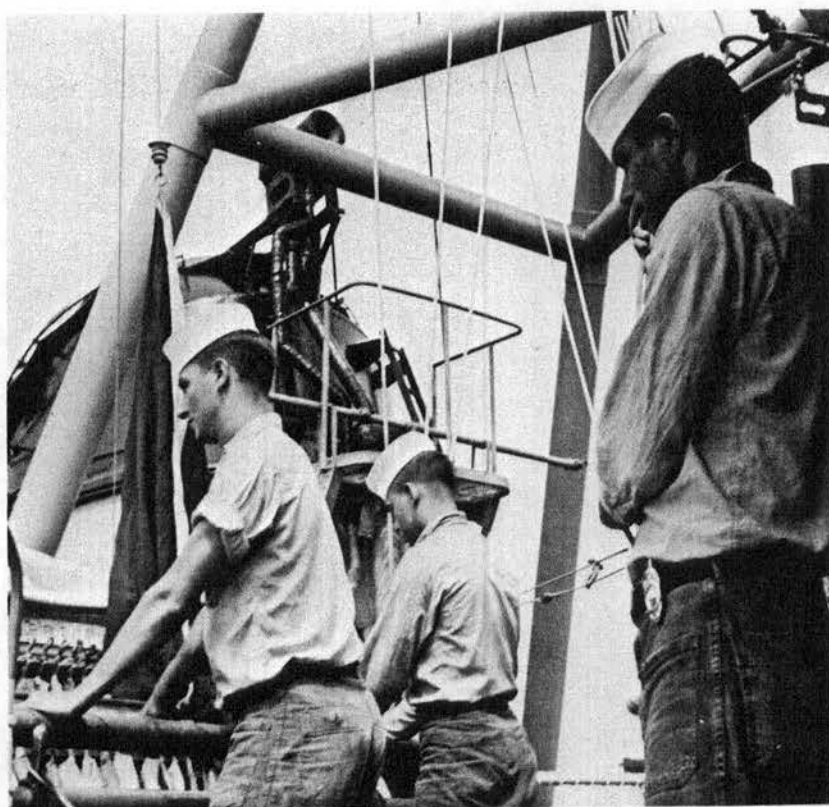
Oh what a day this has been

Getting the ball scores

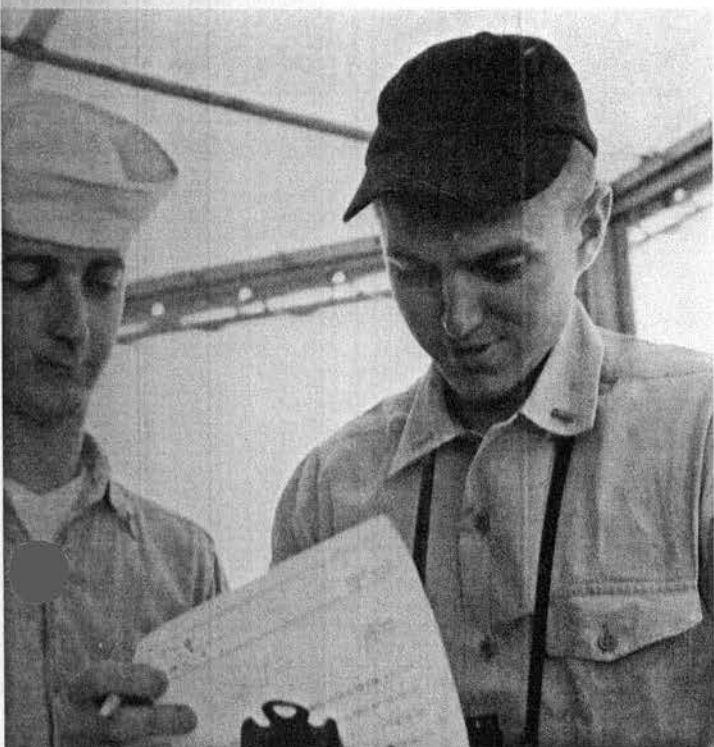




That's the way it came over I tell you

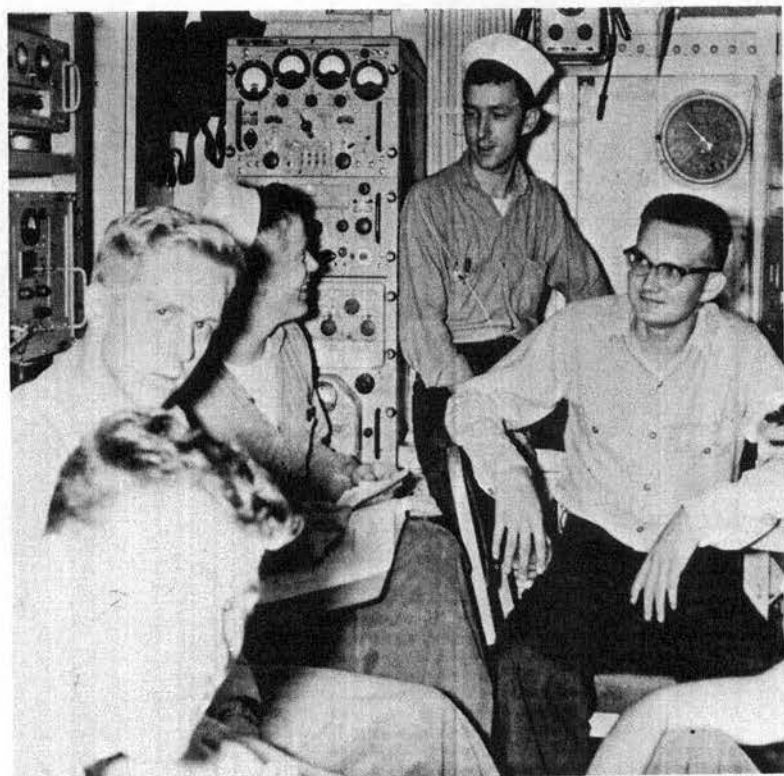
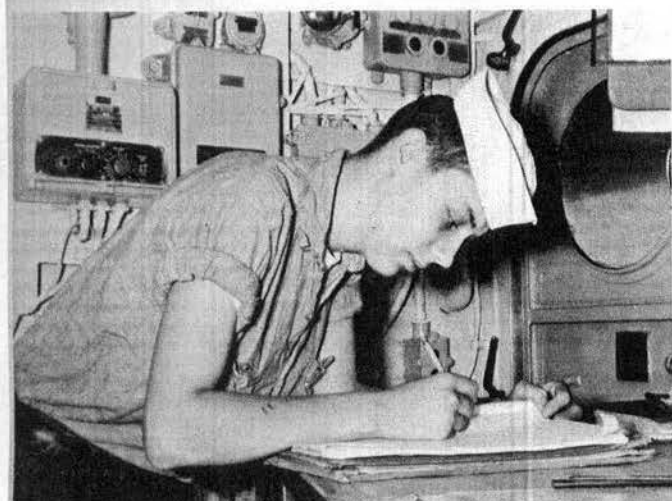


Under the watchful eye of our leader



Well we're going to New York again

The ship's diary



A brief lull in a hectic day

S DIVISION



HM HOSPITAL CORPSMAN



SK STOREKEEPER



DK DISBURSING CLERK



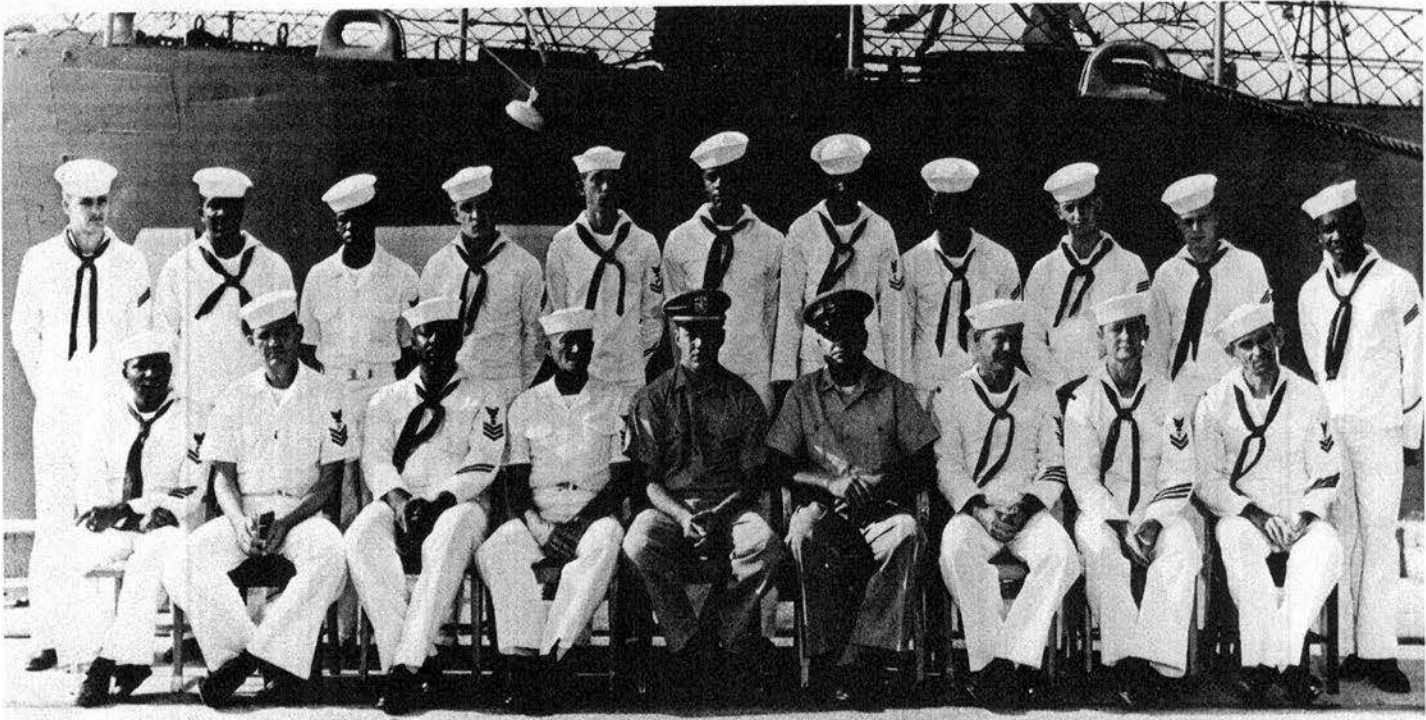
CS COMMISSARYMAN



SH SHIP'S SERVICEMAN

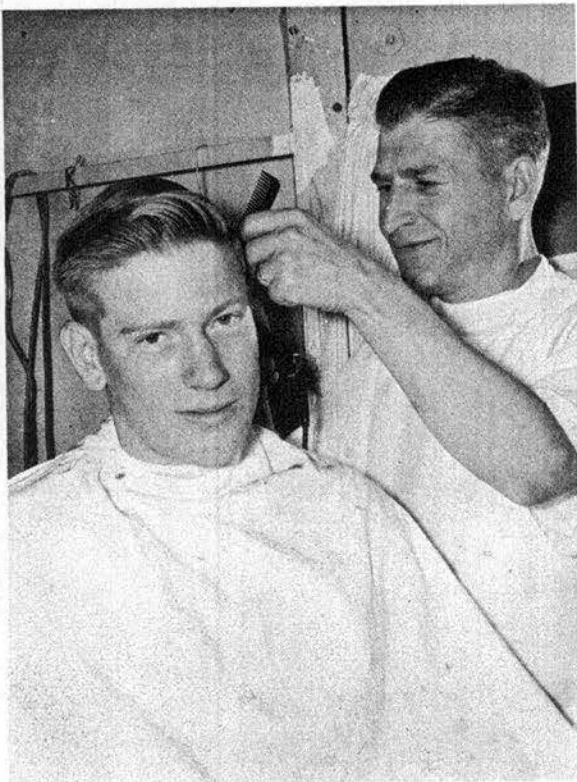


SD STEWARD



Left to Right—First row—Coardes, D., SD2; Petty, G. L., SH1; Campbell, L. R., SK1; Puckhaber, F. B., SK1; ENS Benson; Hancock, C. D., CSC; Newton, L. E., HM1; Chunn, C. R., SH2; Setzer, R. J., CS2. Second row—McConnell, D. L., SHSN; Bell, C. C., TN; Bond, P., SHL3; Carter, D. F., SN; Bailes, J. L., DK2; Sabbath, C. O., TN; Davis, J. J., SD2; Woodward, W. K.,

SN; Copland, R. E., SN; Olson, D. L., SN; Davis, A. L., TN. Men not in Picture—Harvell, J. D. D., CS1; Corwin, J. D., CS3; Drane, J. R., SH; Helderbride, R. S., SN; Wilson, J. D., SD3; Smith, O. E., SN; Patrick, M. I., CS1; Hanft, M., SN; Neal, D. O., GM3; Thompson, A. E., TN; Carma W. M., SN; Russell, J. B., SN.



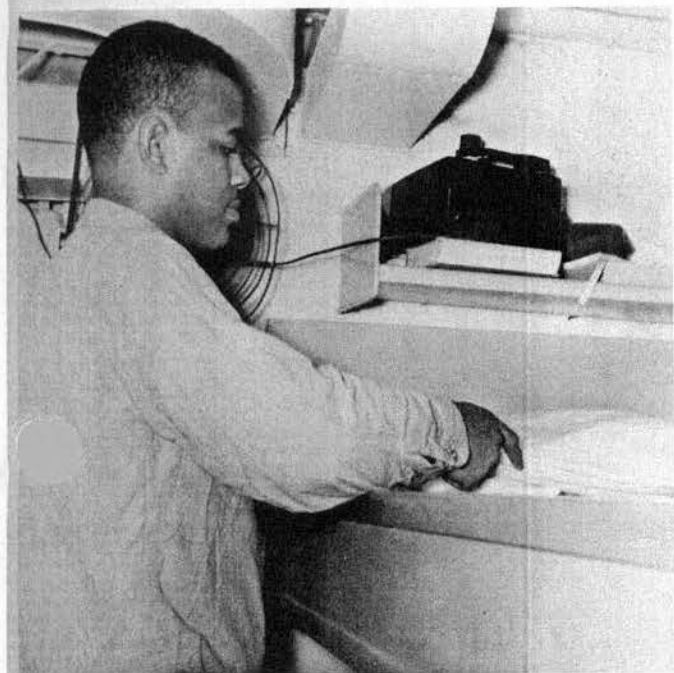
It'll grow back in a week



Every time I look at that needle it gets bigger

\$490—\$495—\$500 . . .





A steward's work is never done

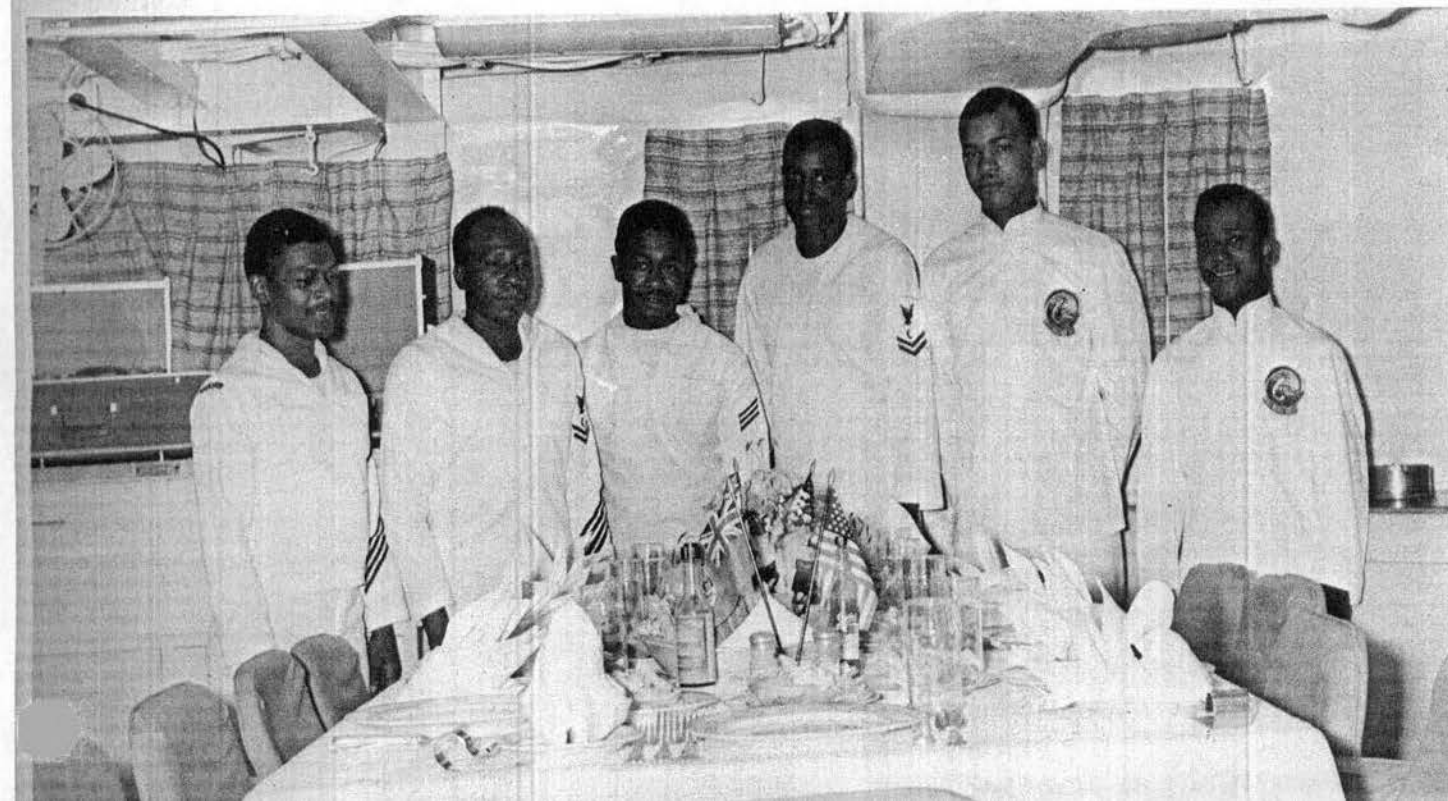


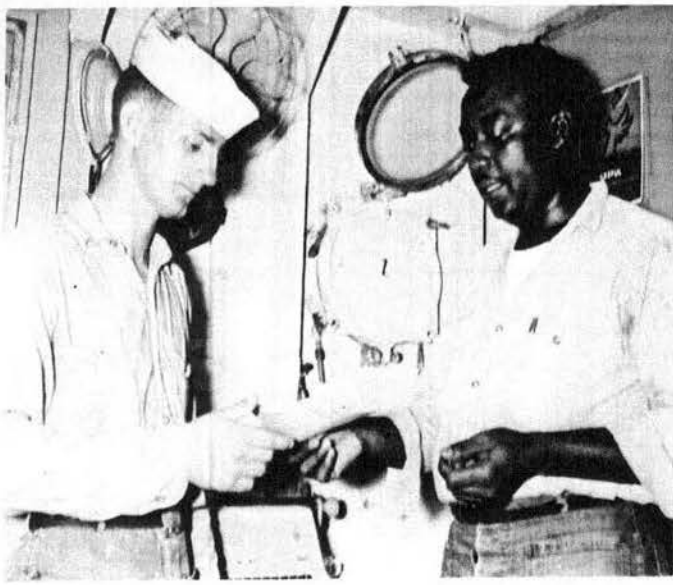
It's wash day, every day on the BEALE



Everything in the Navy has a stock number

The stewards set a fine table

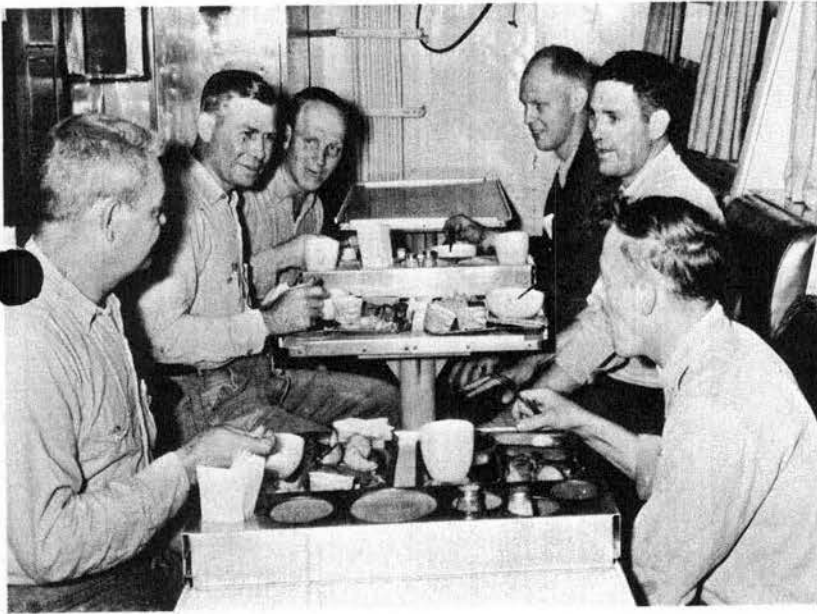




You'll have to git these 1150's signed first



A "Nutty Buddy" always brightens the afternoon

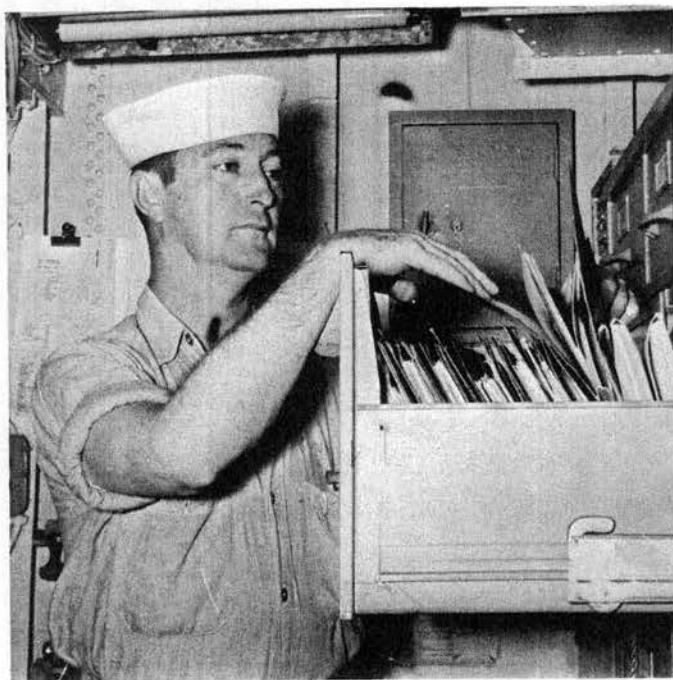


Nothing like good chow along with a good discussion

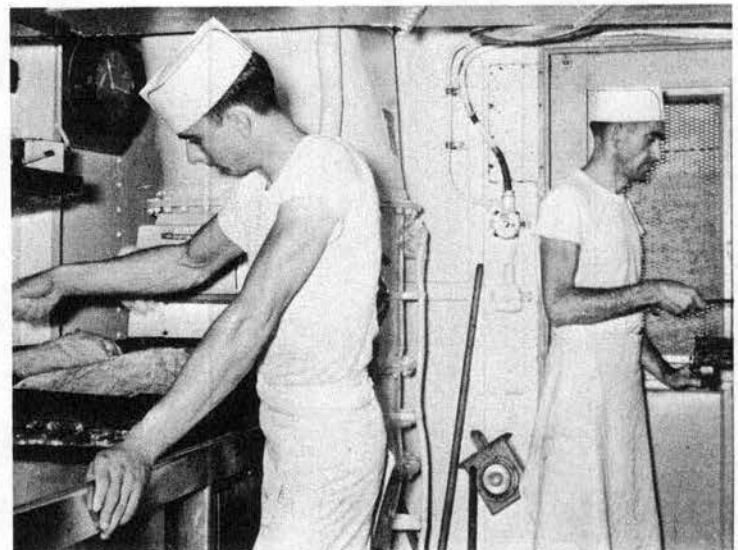


If I could only afford it.

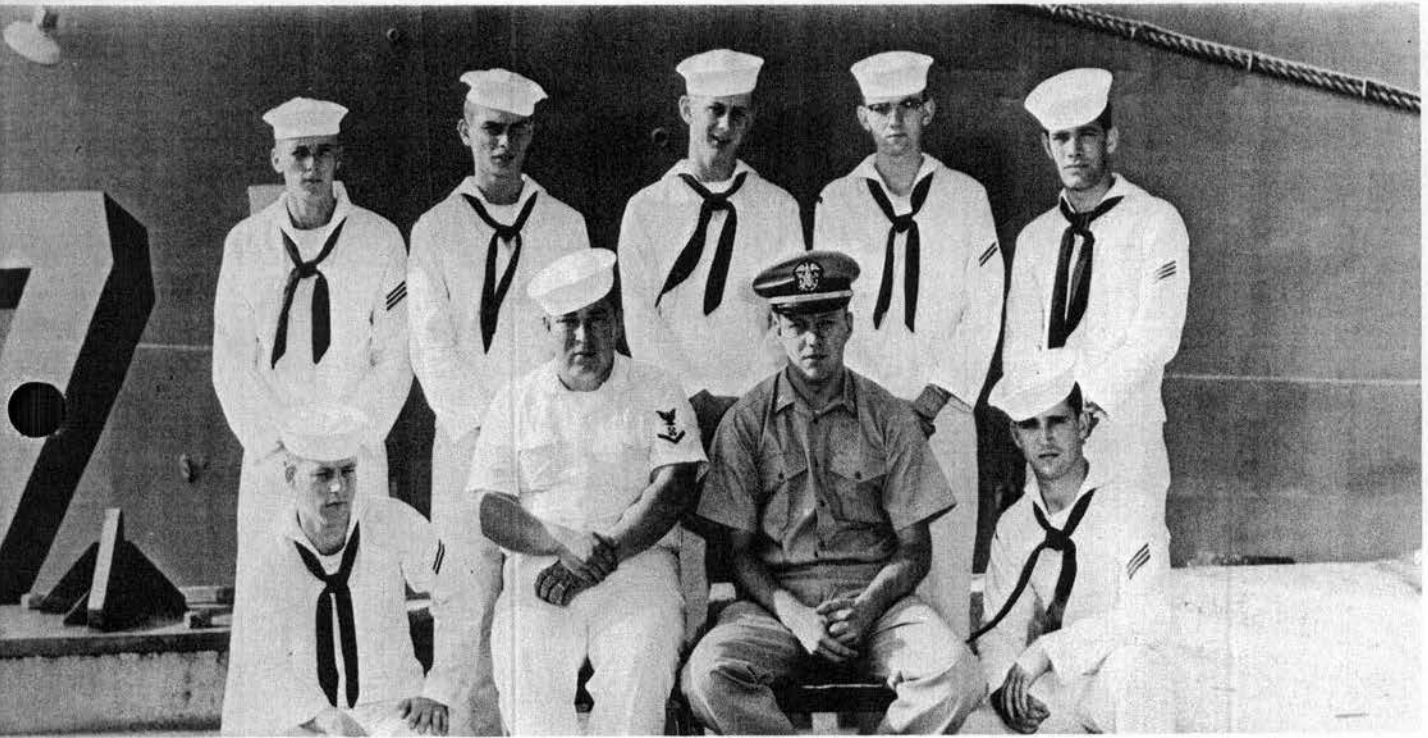
A pinch more of salt



In the Navy things aren't lost they're just misfiled



X DIVISION

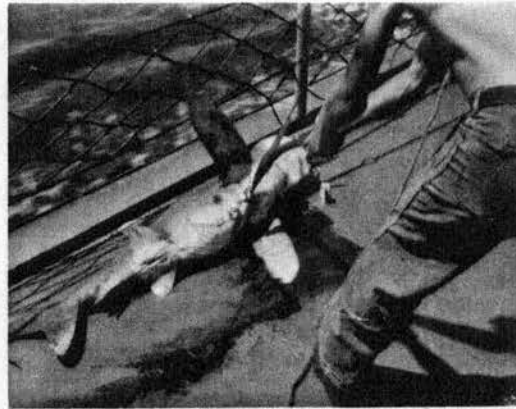


Left to Right—First row—Reich, E. R., SN; Bissonette, M. C., BM3; ENS Benson; Halsdorf, R. F., SN. Second row—Gregory, H. S., SN; Nuttall,

R. A., FA; Focht, W. K., SA; Welch, C. D., FA; Schroöder, J. O., FN. Men not in Picture—Shoemaker, D. L., QMSA.



The happy side of mess cooking

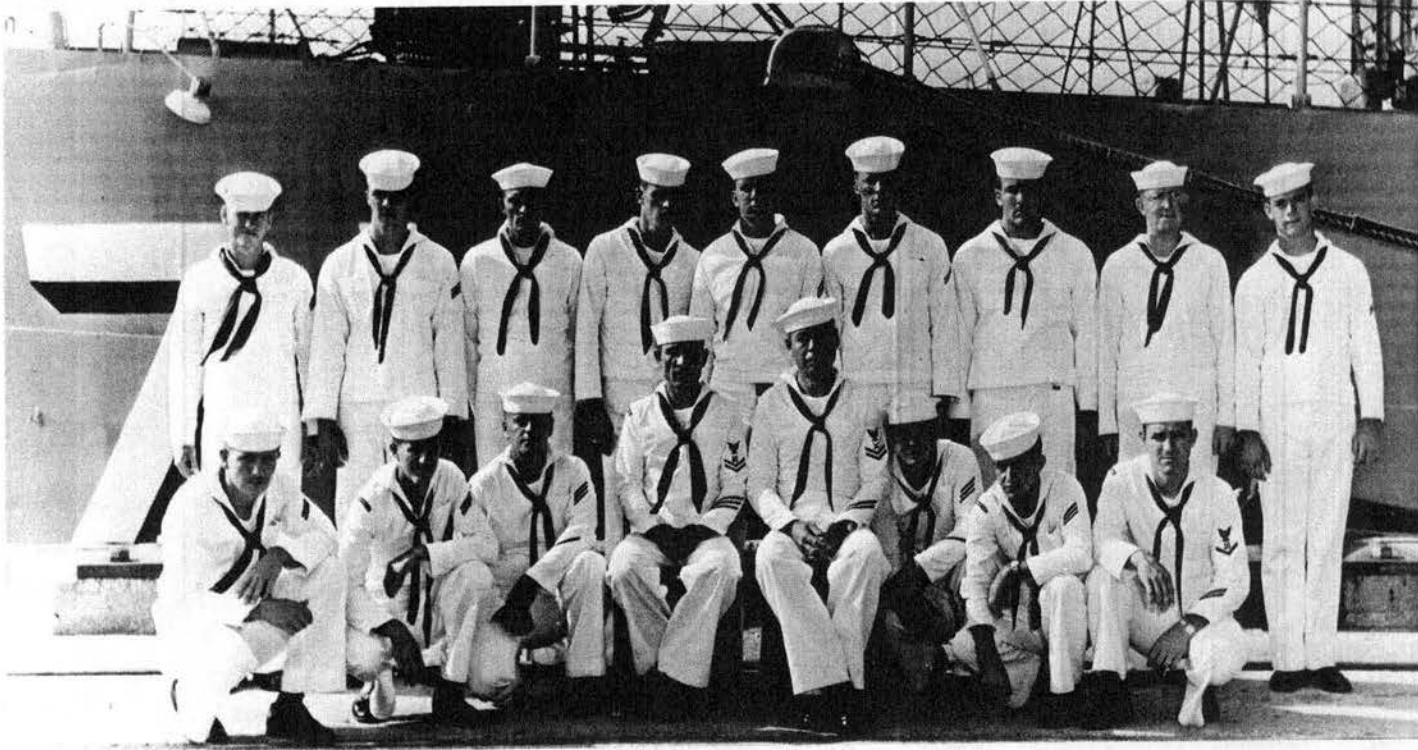


It's Friday again

Hurry up with the gravy



1st DIVISION



Left to Right—First row—Lovill, C. J., SN; Stone, G. L., SA; McDaniel, D. R., SN; Case, A., BM2; Perry, W. D., GM2; Veach, C. K., SN; Bentley, R. E., GMSN; Altizer, E. E., BM3. Second row—McCloskey, P. E., SN;

Collins, S. F., SN; Collins, W. E., BMSN; Mooney, J. D., GMSN; McKenn J. L., SN; Trotter, G. A., SN; Gross, G. A., SN; Lamb, D. K., SN; Sath J. B., SA. Men not in Picture—Kendzierski, R. M., SN.

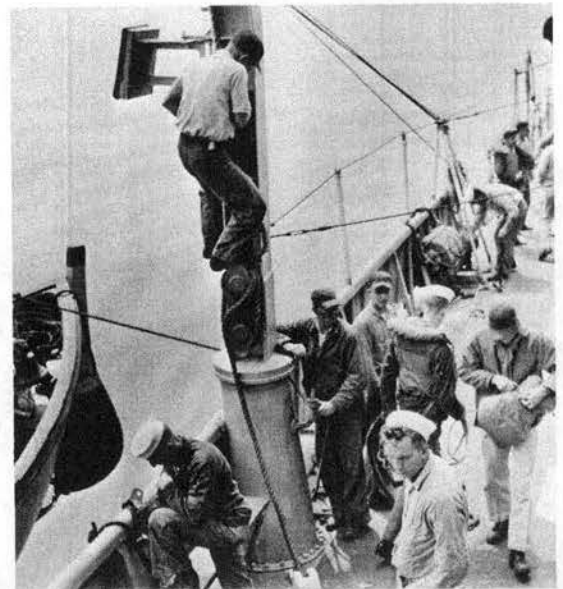


We have got the best whale boat in the squadron.



The movie for tonight will be "The Desert Shiek" starring Rudolph Valentino.

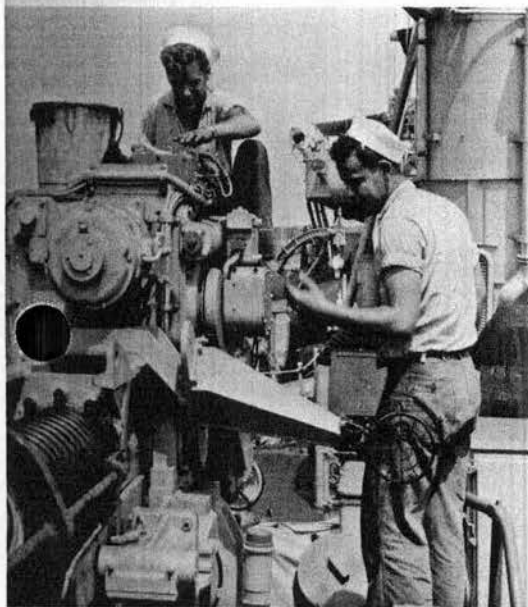
What's going on here?





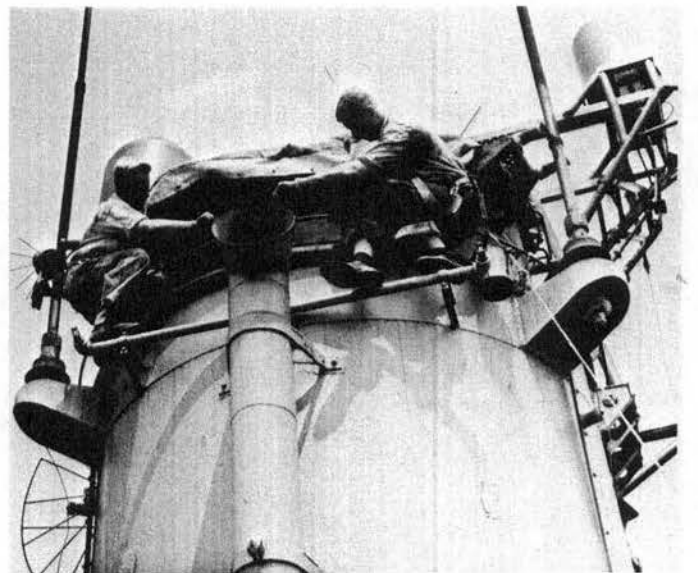
Left to Right—First row—Whittle, L. M., GM3; Smith, R. L., GM1; ENS Macloed; Ayres, J. P., BM2; Morris, W. G., GM3; Young, W. H., SN. Second row—Galen, T. G., SN; Llewellyn, E. M., SN; Stambro, J. G., SA; Woodward, W. K., SA. Men not in Picture—Rodgers, H. T., GM3; George,

H. C., GMSN; Stepping, H. A., SA; Mireles, A., SA; Kleinfeldt, SN; Dreyer, W. W., SN; Paul, H. J., SA; Leslie, A. D., SN; Reid, C. O., SN; Taylor, J. W., GMC; Allen, E. V., BM3; Reich, L. E., SA; Cook, R. E., SA.



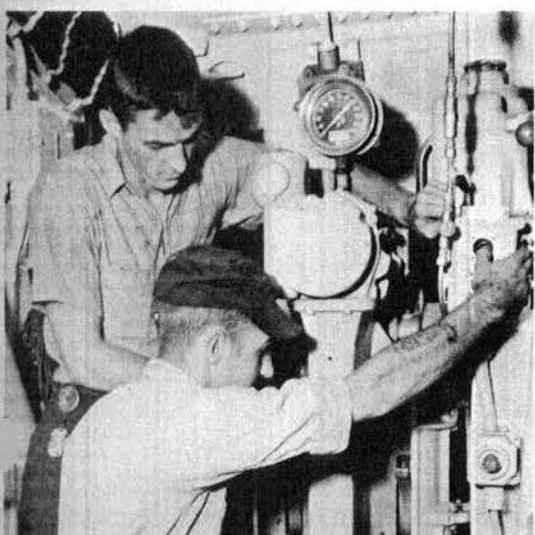
hands were chapped too, before I switched to

One beer coming up

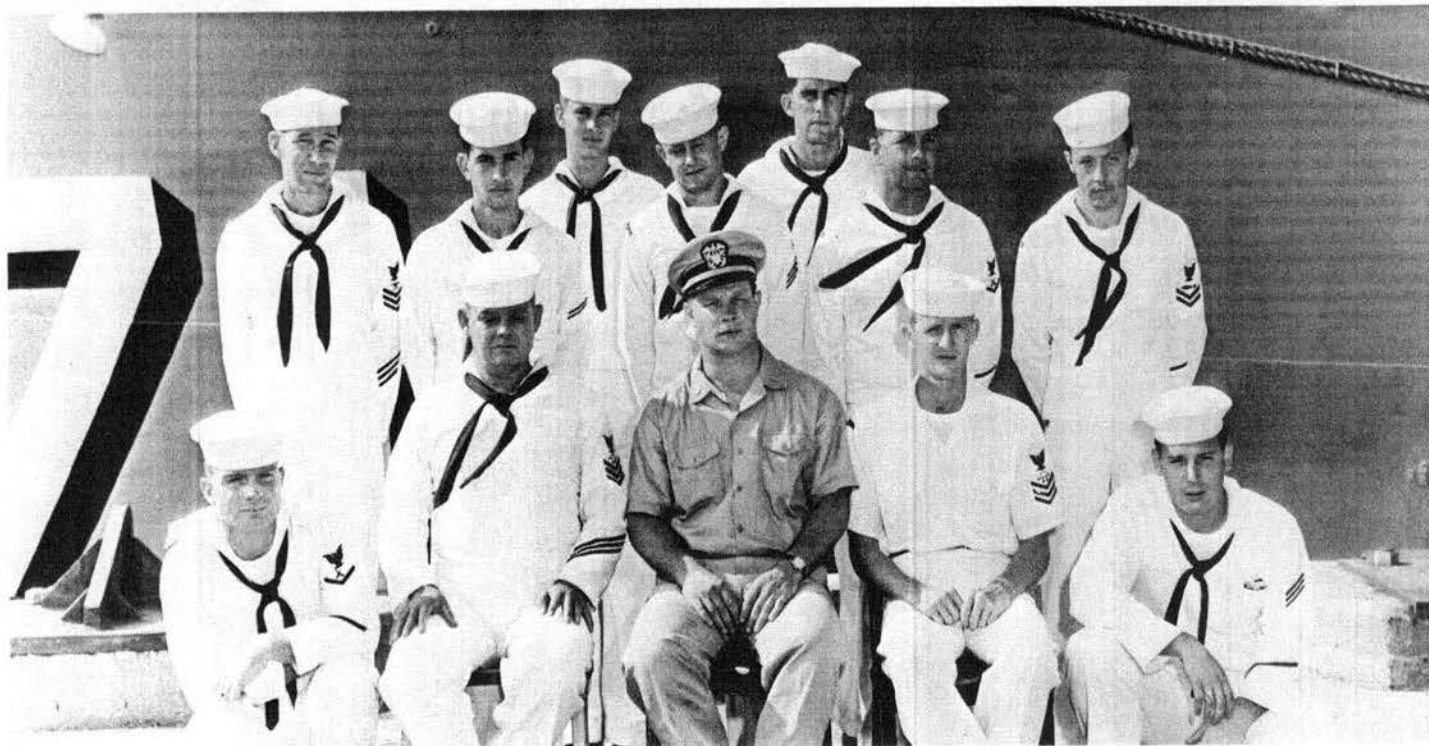


Please don't feed the monkeys

Field day

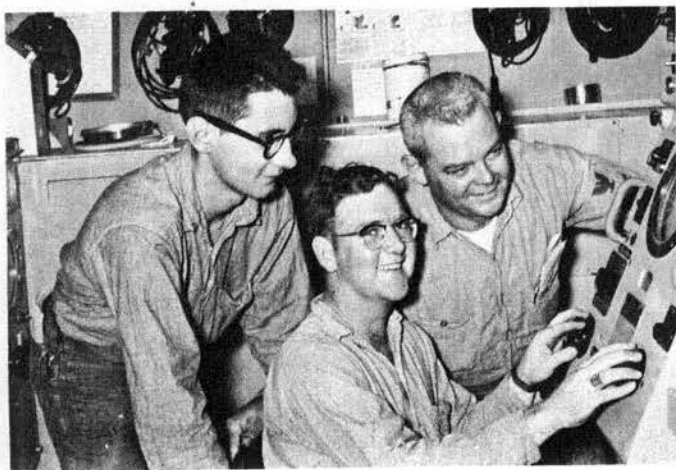


FOX DIVISION

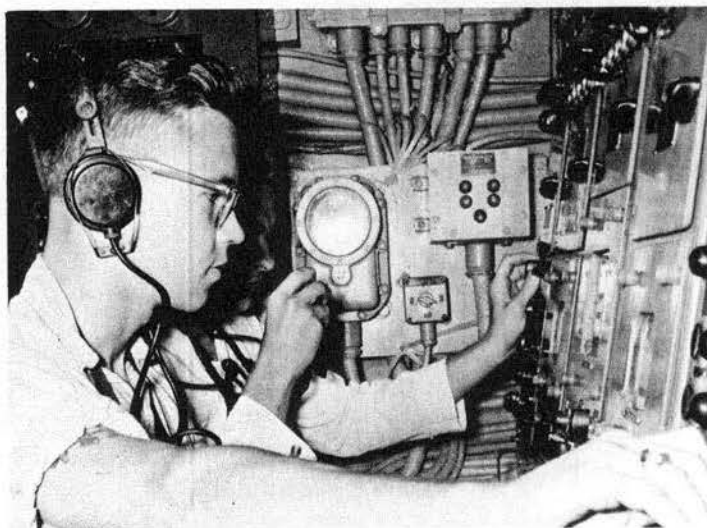


Left to Right—First row—Carler, J. A., GM3; Grant, G. T., SO1; DeSantis, A. E., ENS; Turner, D. L., SO1; Whetstone, C. I., SOGSN. Second row—Booth, L. G., FT1; Cutler, A. T., SOGSN; Mission, G. R., TMSN; Barger, J. I., SOGSN; Guss, H. A., SOG2; Roney, S. F., GM3; Lovell, B. D., TM2. Men not in Picture—Caronia, S., TM1; Krueger, R. G., SOG2; Paschall,

M. M., FT3; Hoffer, J. M., FT3; Semencar, G. W., SOG3; Haddock, F. W. SOGSN; Sexton, W. W., SOG3; Jenkins, J. P., SOG3; Nelson, H. M. FT2; Havens, R. G., SN; Katsch, K. M., FTUSN; Ste Marie, D. G., SN Gray, G. W., SN; Temperino, P. L., FT2; Anthony, W. A., FT3; Wiese D. F., SH3; Reboulet, C. F., SN; Byron, D. F., SN; LeBlanc, G., SN.

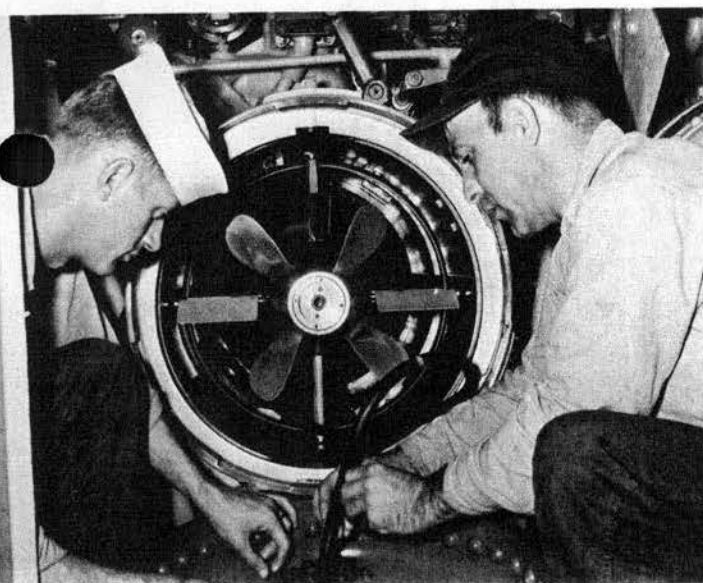


Come on over and watch the porpoise



Sorry, wrong number

Hope it's a good slide



I think we're going to have some parts left over



Where did that plane go



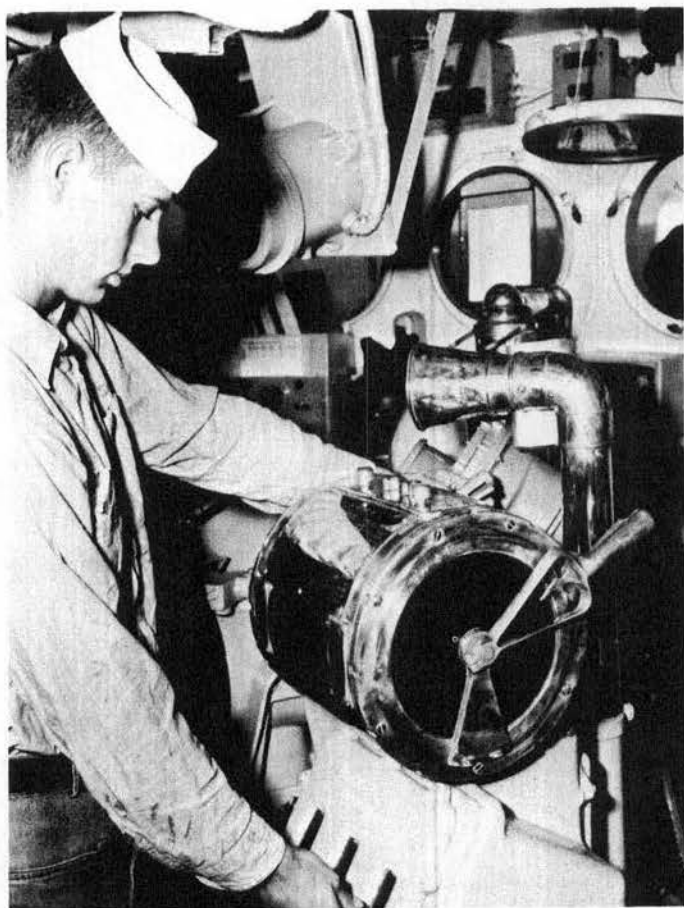
Quebec wasn't like this



Heave? Here comes 8 days mail

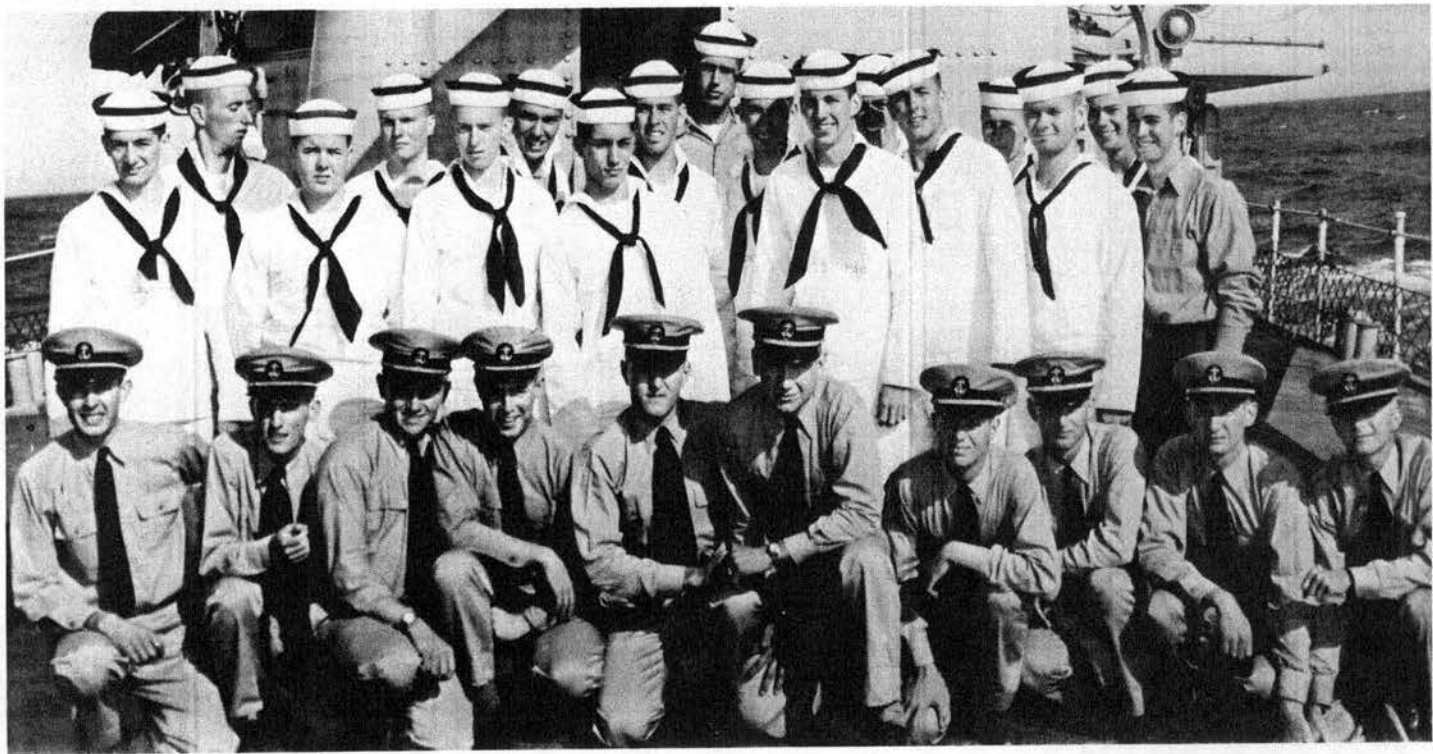


Baby Blue! What are they going to do, repaint the ward-room?



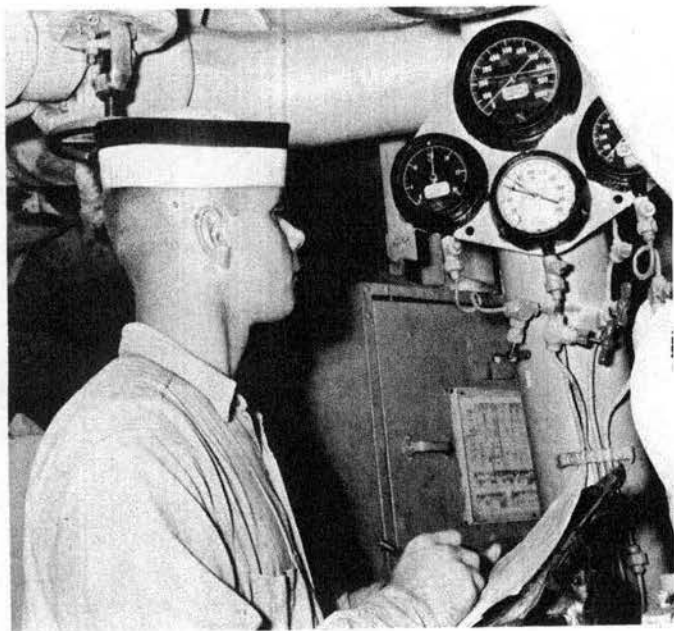
Drop 4, add 5, subtract 2

MIDSHIPMEN

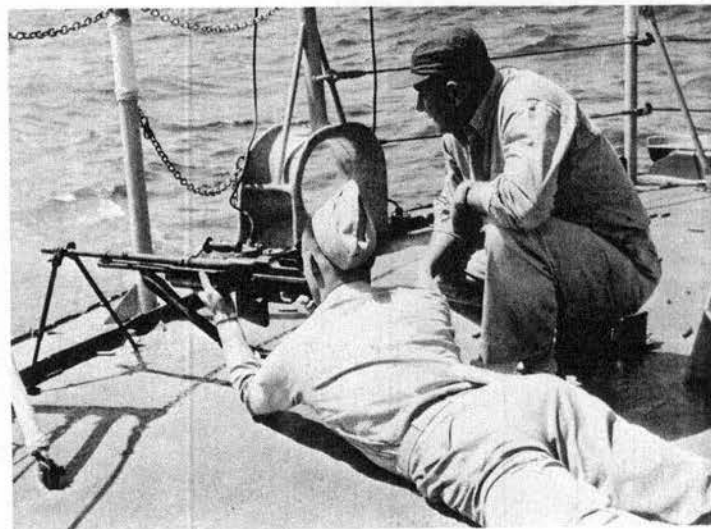


First row—Coe, D. A.; Brown, C. K.; Fletcher, R. L.; Bennett, C. W.; Barnett, R. W.; Fentress, C. M.; Meakim, J. T.; Breakenridge, D. R.; Pierson, M. A.; Dickey, E. H. Second row—Graham, E. N.; Demick, W. E.; Heenan, D. F.; Madeo, R. A.; Counts, W. A.; Green, F. B.; Matheidas,

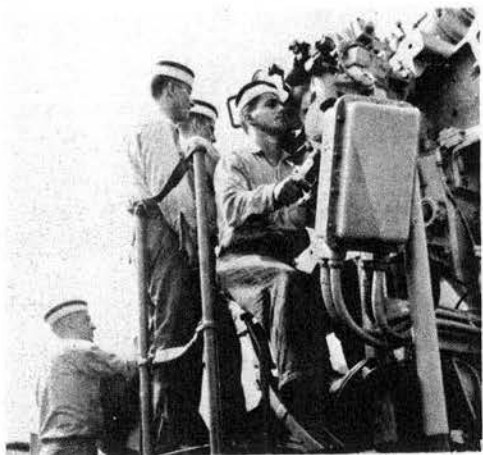
J. R.; Cline, M. L. Third row—Bugg, W. E.; Davis, H. H.; Mitchell, M. A. Clemons, V. E.; Haywood, A. T.; Clickener, J. R.; Gould, J. W.; Perry, L. B. Johnson, W. S.



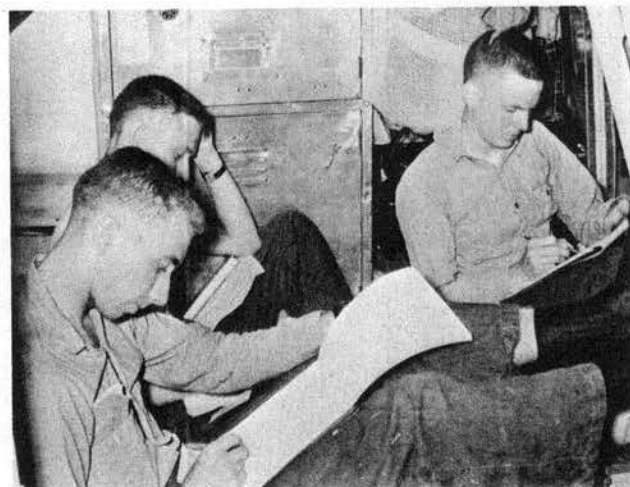
I know what it reads. But what does it mean?



Just like Coney Island



A little practice on the 3"



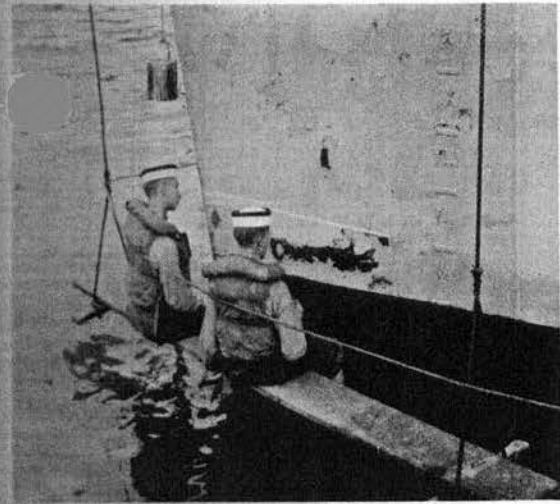
Dear Abby



Getting a practical factor signed



You usually know where to find the first class



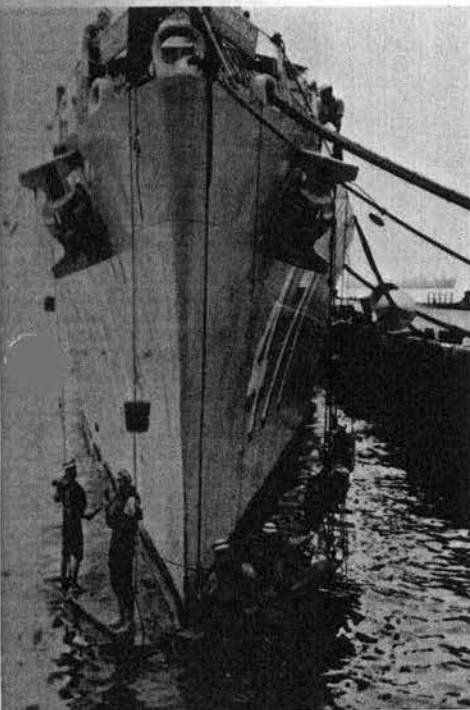
Modern art



At the Conn



Radio check, over.



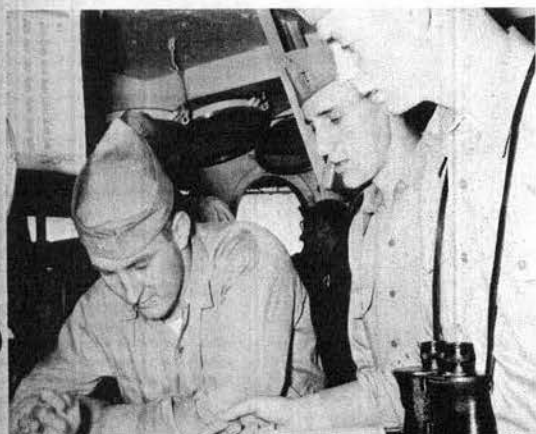
Other told me not to get my feet wet



This wasn't a practical factor

Learning by doing

I told you it was 238°

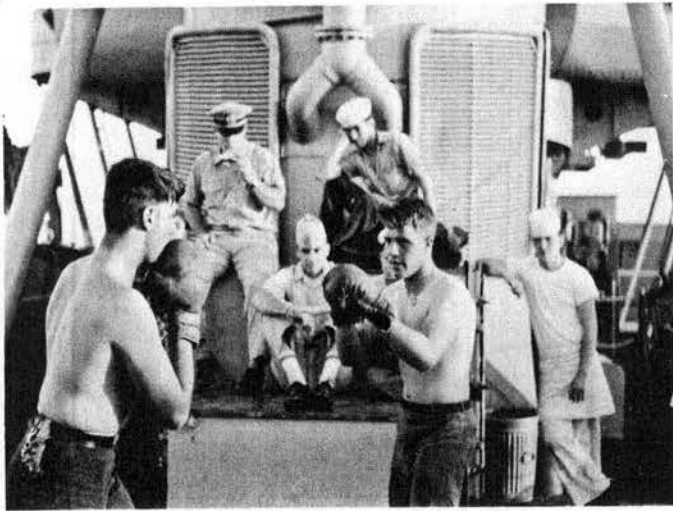




The band that made the BEALE famous



You should seen the kick



Watch out for that right



Relaxation is good for the soul

How could I have been so dumb!



"I'd never seen her in a sweate

